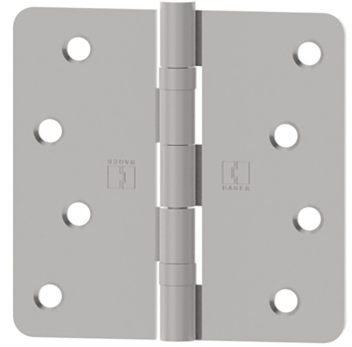


RCBB1541

Five Knuckle
Ball Bearing Hinge

Application:

- ANSI A514
- Reversible
- Round corners - 1/4" (6 mm) radius
- Removable pin



PRODUCT SPECIFICATIONS

MATERIAL:

- Stainless steel with stainless steel pin

FINISHES:

- US32D

PACKAGING:

- 2 pack with screws

NOTES:

- Hager residential hinges are provided without lubrication. We recommend lubricating the hinges after installation.
- All residential hinges conform to the "Light Weight" requirements of ANSI A156.1.

PRODUCT SIZE OPTIONS

HINGE SIZE (INCHES)	HINGE SIZE (MM)	HOLE COUNT	GAUGE OF METAL	PIN DIAMETER	SCREW SIZE (WOOD)
3 x 3	76 x 76	6	.085	.234	3/4 x 9 FH
3 1/2 x 3 1/2	89 x 89	6	.085	.234	3/4 x 9 FH
4 x 4	102 x 102	8	.085	.234	3/4 x 9 FH