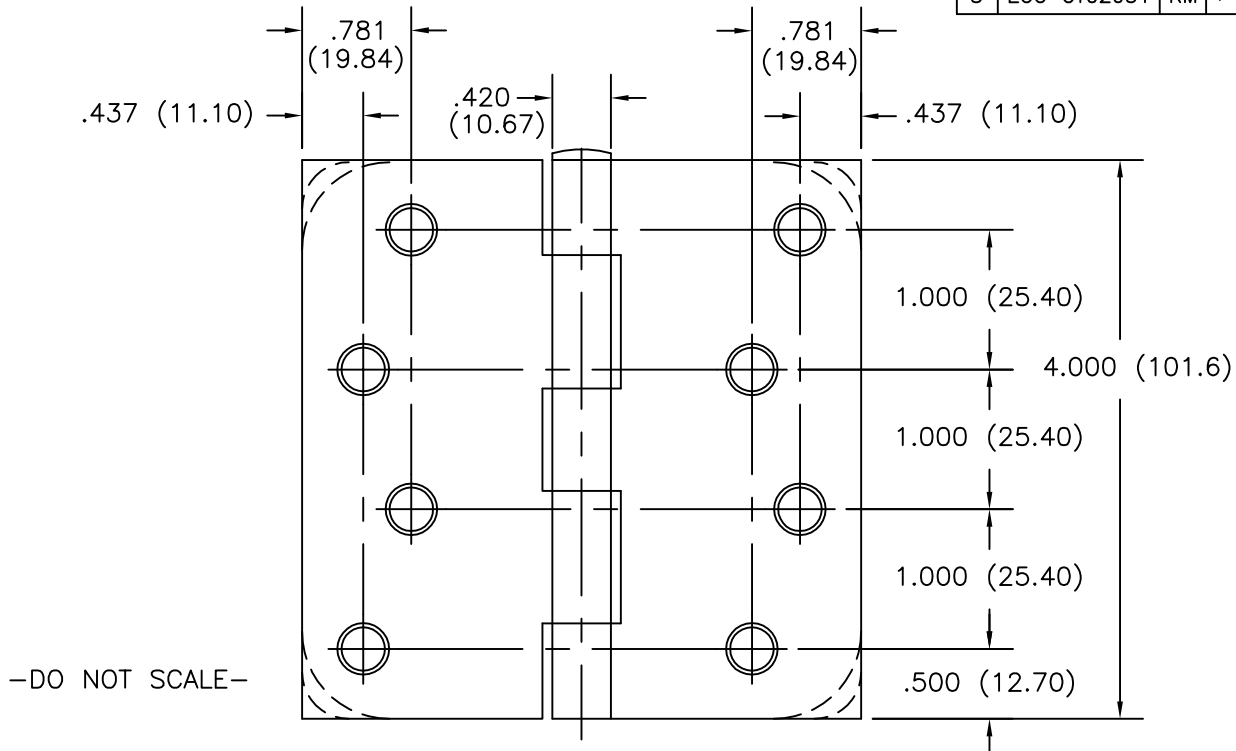


FULL MORTISE
RESIDENTIAL HINGE

SIZE: 4 x 4
(101.60 x 101.60)

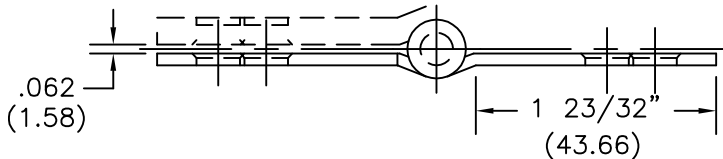
Template No. T399

No.	REVISION	BY	DATE
3	ECO CT02051	RM	1-30-03



-DO NOT SCALE-

PIN DIAMETER .234 (5.9)
COUNTERSUNK FOR #9 SCREWS



ALL NON-BRACKETED DIMENSIONS
ARE IN INCHES,
ALL BRACKETED DIMENSIONS
ARE IN MILLIMETERS.

CATALOG NUMBER		TYPICAL CORNER RADII	METAL GAUGE
STEEL HINGES	NON- FERROUS HINGES		
	1541	SQUARE	.085 (2.16)
1741		SQUARE	.085 (2.16)
1743		SQUARE	.085 (2.16)
1746		SQUARE	.085 (2.16)
	RC1541	1/4 (6.35)	.085 (2.16)
RC1741		1/4 (6.35)	.085 (2.16)
7741		1/4 (6.35)	.085 (2.16)
RC1743		1/4 (6.35)	.085 (2.16)
RC1746		1/4 (6.35)	.085 (2.16)

Hager testing conforms to ANSI-A156.1.

HAGER RESERVES THE RIGHT TO MAKE
DESIGN CHANGES WITHOUT NOTICE. CALL
HAGER ENGINEERING AT 1-800-325-9995
FOR LATEST REVISION DATE OF TEMPLATE.



HAGER COMPANIES
139 VICTOR STREET
P.O. BOX 12300
ST. LOUIS, MISSOURI 63157-0300

CATALOG NUMBER		TYPICAL CORNER RADII	METAL GAUGE
STEEL HINGES	NON- FERROUS HINGES		
	RC1542	5/8 (15.88)	.085 (2.16)
RC1641		5/8 (15.88)	.085 (2.16)
8641		5/8 (15.88)	.085 (2.16)
RC1841		5/8 (15.88)	.085 (2.16)
RC1842		5/8 (15.88)	.085 (2.16)
8741		5/8 (15.88)	.085 (2.16)
RC1843		5/8 (15.88)	.085 (2.16)
RC1846		5/8 (15.88)	.085 (2.16)
8744		1 LEAF SQUARE/ 1 LEAF 5/8 (15.88)	.085 (2.16)
RC1847		1 LEAF SQUARE/ 1 LEAF 5/8 (15.88)	.085 (2.16)
1848		1 LEAF SQUARE/ 1 LEAF 5/8 (15.88)	.085 (2.16)
8746		1 LEAF SQUARE/ 1 LEAF 5/8 (15.88)	.085 (2.16)
1816		1 LEAF SQUARE/ 1 LEAF 5/8 (15.88)	.085 (2.16)
BB1816		1 LEAF SQUARE/ 1 LEAF 5/8 (15.88)	.085 (2.16)
1817		1 LEAF SQUARE/ 1 LEAF 5/8 (15.88)	.085 (2.16)
BB1817		1 LEAF SQUARE/ 1 LEAF 5/8 (15.88)	.085 (2.16)
1818		1 LEAF SQUARE/ 1 LEAF 5/8 (15.88)	.085 (2.16)
1819		1 LEAF SQUARE/ 1 LEAF 5/8 (15.88)	.085 (2.16)
	1543	1 LEAF SQUARE/ 1 LEAF 5/8 (15.88)	.085 (2.16)
	BB1543	1 LEAF SQUARE/ 1 LEAF 5/8 (15.88)	.085 (2.16)

Template No. T399