

THIS SIDE UP FOR LHR DOOR

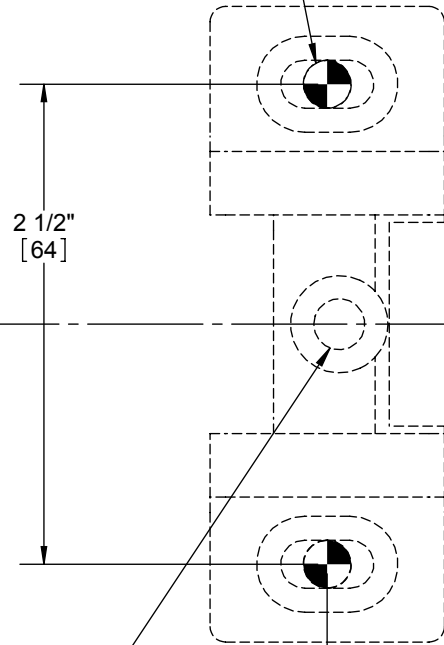
# 4700 RIM FIRE RATED EXIT DEVICE SEVERE WINDSTORM TEMPLATE (FOR FIRE RATED DEVICES ONLY)

(REV: 01)  
DWG NO: T-ED00325

FOLD HERE  
**CAUTION**  
DO NOT USE DOOR EDGE!

PLACE THIS SIDE ON FRAME STOP  
PLACE THIS SIDE ON DOOR

(2x) METAL: DRILL/TAP FOR 1/4"-20 MACHINE SCREWS.  
WOOD: PRE-DRILL 1/8" HOLES.



DRILL/TAP FOR 1/4"-20 AND INSTALL SCREW AFTER FINAL ADJUSTEMENTS.

29/32" [23]  
ADJUST FOR BEST FIT

FRAME STOP  
DOOR

2 1/4" [57]

"A" LABELED HOLES:  
METAL: DRILL/TAP FOR 1/4"-20 MACHINE SCREWS  
FOR SEXBOLTS: DRILL 5/16" CLEARANCE HOLE  
ON PUSH SIDE, 3/8" HOLE ON PULL SIDE

"B" LABELED HOLES:  
METAL: DRILL/TAP FOR 1/4"-20 MACHINE SCREWS  
FOR SEXBOLTS: DRILL 5/16" CLEARANCE HOLE  
ON PUSH SIDE, 3/8" HOLE ON PULL SIDE  
FOR TRIM: DRILL 5/16" CLEARANCE HOLES ON  
ON PUSH SIDE, 1/2" HOLES ON PULL SIDE

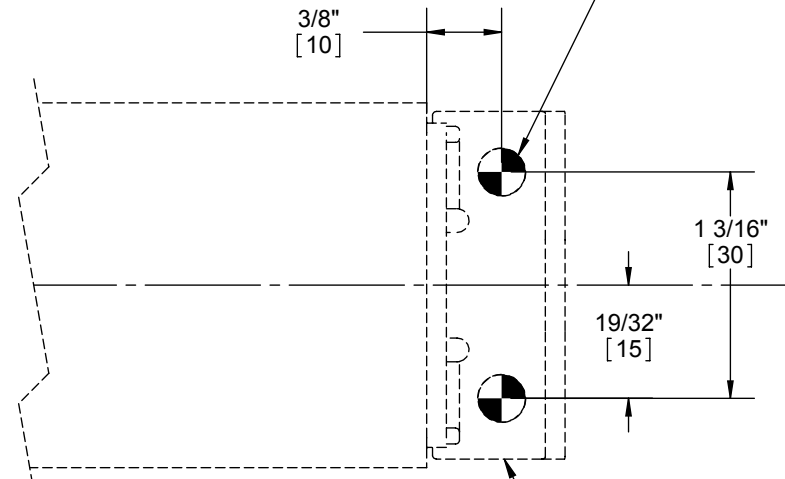
FOR TRIM DRILL 1/2" CLEARANCE HOLE.

☒ OF DEVICE AND STRIKE

40" [1016]  
RECOMMENDED HEIGHT MAY BE  
DETERMINED BY DESIGN SPEC'S

FINISHED FLOOR

(2x) METAL: DRILL/TAP FOR 1/4"-20 MACHINE SCREWS  
WOOD: PRE-DRILL 1/8" HOLES  
SEXBOLTS: DRILL 5/16" CLEARANCE HOLE ON PUSH SIDE,  
3/8" HOLE ON PULL SIDE.



AFTER EXIT DEVICE IS CUT AND MOUNTED, INSTALL END CAP BRACKET CENTERED ON DEVICE ☒

 HOLE LOCATIONS

PRIMARY DIMENSIONS SHOWN IN INCHES,  
DIMENSIONS IN [ ] ARE MILLIMETERS.

THIS SIDE UP FOR RHR DOOR

