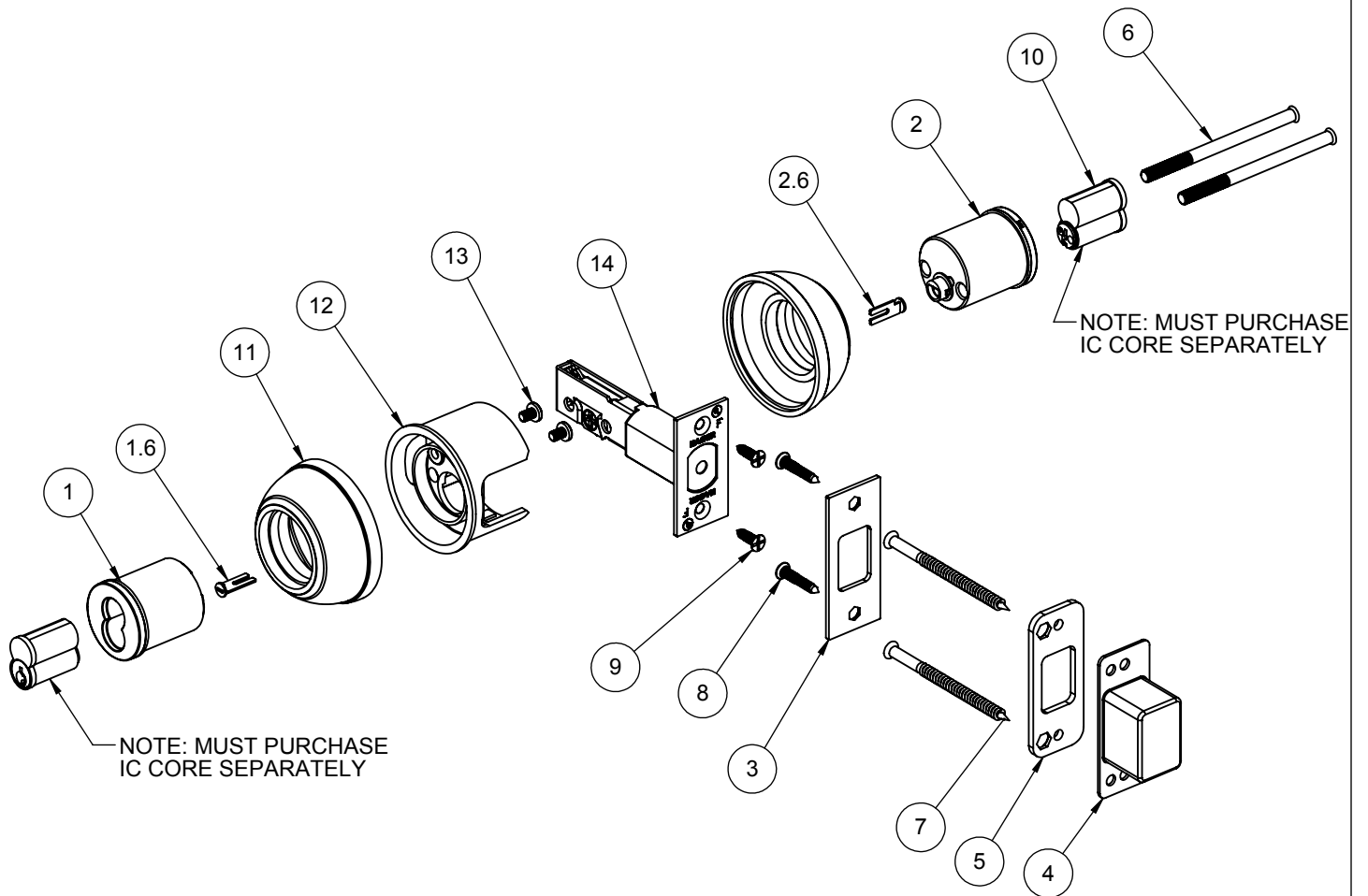


| ITEM NO. | FILE NAME         | DESCRIPTION                           | QTY. |
|----------|-------------------|---------------------------------------|------|
| 1        | S-LS00718         | EXTERIOR DOUBLE CYLINDER HOUSING - IC | 1    |
| 1.6      | S-LS00606         | TAILPIECE (2-639-7091)                | 1    |
| 2        | S-LS00718         | INTERIOR DOUBLE CYLINDER HOUSING - IC | 1    |
| 2.6      | S-LS00606         | TAILPIECE (2-639-7091)                | 1    |
| 3        | S-LS00723         | DEADBOLT STRIKE                       | 1    |
| 4        | S-LS00725         | DEADBOLT DUST BOX                     | 1    |
| 5        | S-LS00724         | DEADBOLT WOOD REINFORCER              | 1    |
| 6        | S-LS00884         | CUSTOM #12-24 x 3-1/4"OPHMS           | 2    |
| 7        | S-LS00885         | CUSTOM #10 X 3" FPHWS                 | 2    |
| 8        | S-LS00882         | #8 X 1-1/4" FPH COMBO SCREW           | 2    |
| 9        | S-LS00882         | #8 X 3/4" FPH COMBO SCREW             | 2    |
| 10       | S-LS00550         | INTERCHANGEABLE CORE                  | 2    |
| 11       | S-LS00367         | ROSE                                  | 2    |
| 12       | S-LS00379         | IC CORE CYLINDER FIRE SHIELD          | 1    |
| 13       | pan cross head_ai | #8-32 X 1/4" PHMS                     | 2    |
| 14       | S-LS00007         | 3940 DEADBOLT LATCH (2-3/4" BACKSET)  | 1    |



**PROPRIETARY & CONFIDENTIAL**  
 THE INFORMATION CONTAINED IN THIS DRAWING IS THE SOLE PROPERTY OF HAGER COMPANIES. ANY REPRODUCTION IN PART OR AS A WHOLE WITHOUT THE WRITTEN PERMISSION OF HAGER COMPANIES IS PROHIBITED.

HAGER RESERVES THE RIGHT TO MAKE DESIGN CHANGES WITHOUT NOTICE. CALL HAGER ENGINEERING AT 1-800-325-9995 FOR THE LATEST REVISION DATE OF TEMPLATE.

|                      |                          |
|----------------------|--------------------------|
| MATERIAL             | Material <not specified> |
| FINISH               | -                        |
| DO NOT SCALE DRAWING |                          |

|  |   |          |
|--|---|----------|
| DRAWN  | - | 9/9/2010 |
| ENG. APPR.   | - | -        |
| Q.A.   | - | -        |
| TOLERANCES:<br>FRACTIONAL: ±0.015"<br>ANGULAR: MACH: ± 1° BEND: ±1°<br>TWO PLACE DECIMAL: ±0.01"<br>THREE PLACE DECIMAL: ±0.004" |   |          |

|                                       |              |              |  |
|---------------------------------------|--------------|--------------|--|
| 3114                                  |              | REV. -       |  |
| GRADE 1 - DOUBLE CYLINDER IC DEADBOLT |              |              |  |
| SIZE                                  | DWG. NO.     | REV.         |  |
| A                                     | S-LS00877    | -            |  |
| SCALE: 1:4                            | WEIGHT: 1.98 | SHEET 1 OF 1 |  |