

# **ACT**

ADVANCED CABLE TIES, INC.



## ADVANCED CABLE TIES, INC.

Advanced Engineering + Advanced Processing  
= Advanced Cable Ties



- UL, UR, CSA, Mil-Spec Approved, ROHS Compliant Products
- ISO 9001:2015 Registered Quality System
- Personal Customer Service Representative
- 100% Product Guarantee



SAE AS23190  
Mil-Spec Approved  
AS33671



## Miniature 18 lb. Cable Ties

Per Bag	ACT Part Number	Color & Material	Length Inch/mm	Width Inch/mm	Thickness Inch/mm	Tie Tensile	Diameter Inch/mm	UL-CSA Mil-Spec	Per Case
1,000	AL-04-18-9-M	Natural	4.12/104.77	.095/2.413	.042/1.066	18 lb. 80 n.	.874/22.2	UL-CSA MS3367-4*	10,000
100	AL-04-18-9-C	Nylon							
1,000	AL-04-18-0-M	UV Black							
100	AL-04-18-0-C	Nylon							
1,000	AL-04-18-30-M	Heat Stabilized							
100	AL-04-18-30-C	UV Black Nylon							
1,000	AL-06-18-9-M	Natural	6.18/157.14	.095/2.413	.042/1.066	18 lb. 80 n.	1.50/38.1	UL-CSA	10,000
100	AL-06-18-9-C	Nylon							
1,000	AL-06-18-0-M	UV Black							
100	AL-06-18-0-C	Nylon							
1,000	AL-06-18-30-M	Heat Stabilized							
100	AL-06-18-30-C	UV Black Nylon							
1,000	AL-08-18-9-M	Natural	8.18/207.94	.095/2.413	.042/1.066	18 lb. 80 n.	2.187/55.5	UL-CSA	10,000
100	AL-08-18-9-C	Nylon							
1,000	AL-08-18-0-M	UV Black							
100	AL-08-18-0-C	Nylon							
1,000	AL-08-18-30-M	Heat Stabilized							
100	AL-08-18-30-C	UV Black Nylon							

Tolerance: .xxx = +/-0.005, .xx = +/-0.015, Sold in case quantities

## Intermediate 40 lb. Cable Ties

Per Bag	ACT Part Number	Color & Material	Length Inch/mm	Width Inch/mm	Thickness Inch/mm	Tie Tensile	Diameter Inch/mm	UL-CSA Mil-Spec	Per Case
1,000	AL-05-40-9-M	Natural	5.84/148.33	.140/3.556	.049/1.244	40 lb. 178 n.	1.437/36.4	UL-CSA MS3367-5*	10,000
100	AL-05-40-9-C	Nylon							
1,000	AL-05-40-0-M	UV Black							
100	AL-05-40-0-C	Nylon							
1,000	AL-05-40-30-M	Heat Stabilized							
100	AL-05-40-30-C	UV Black Nylon							
1,000	AL-08-40-9-M	Natural	8.875/225.42	.140/3.556	.049/1.244	40 lb. 178 n.	2.375/60.3	UL-CSA	10,000
100	AL-08-40-9-C	Nylon							
1,000	AL-08-40-0-M	UV Black							
100	AL-08-40-0-C	Nylon							
1,000	AL-08-40-30-M	Heat Stabilized							
100	AL-08-40-30-C	UV Black Nylon							
500	AL-11-40-9-D	Natural	10.96/278.58	.140/3.556	.054/1.371	40 lb. 178 n.	3.375/85.7	UL-CSA	5,000
100	AL-11-40-9-C	Nylon							
500	AL-11-40-0-D	UV Black							
100	AL-11-40-0-C	Nylon							
500	AL-11-40-30-D	Heat Stabilized							
100	AL-11-40-30-C	UV Black Nylon							
500	AL-14-40-9-D	Natural	14.25/361.95	.140/3.556	.054/1.371	40 lb. 178 n.	4.00/101.6	UL-CSA	5,000
100	AL-14-40-9-C	Nylon							
500	AL-14-40-0-D	UV Black							
100	AL-14-40-0-C	Nylon							
500	AL-14-40-30-D	Heat Stabilized							
100	AL-14-40-30-C	UV Black Nylon							

Tolerance: .xxx = +/-0.005, .xx = +/-0.015, Sold in case quantities

## Standard 50 lb. Cable Ties

Per Bag	ACT Part Number	Color & Material	Length Inch/mm	Width Inch/mm	Thickness Inch/mm	Tie Tensile	Diameter Inch/mm	UL-CSA Mil-Spec	Per Case
1,000	AL-07-50-9-M	Natural	7.56/192.07	.180/4.572	.052/1.320	50 lb. 222 n.	1.875/47.6	UL-CSA MS3367-1*	10,000
100	AL-07-50-9-C	Nylon							
1,000	AL-07-50-0-M	UV Black							
100	AL-07-50-0-C	Nylon							
1,000	AL-07-50-30-M	Heat Stabilized							
100	AL-07-50-30-C	UV Black Nylon							
500	AL-11-50-9-D	Natural	11.25/285.75	.180/4.572	.052/1.320	50 lb. 222 n.	3.062/77.7	UL-CSA MS3367-2*	5,000
100	AL-11-50-9-C	Nylon							
500	AL-11-50-0-D	UV Black							
100	AL-11-50-0-C	Nylon							
500	AL-11-50-30-D	Heat Stabilized							
100	AL-11-50-30-C	UV Black Nylon							
500	AL-14-50-9-D	Natural	14.50/368.30	.180/4.572	.052/1.320	50 lb. 222 n.	4.00/101.6	UL-CSA MS3367-2*	5,000
100	AL-14-50-9-C	Nylon							
500	AL-14-50-0-D	UV Black							
100	AL-14-50-0-C	Nylon							
500	AL-14-50-30-D	Heat Stabilized							
100	AL-14-50-30-C	UV Black Nylon							
100	AL-17-50-9-C	Natural Nylon	17.09/434.16	.188/4.775	.060/1.524	50 lb. 222 n.	UL	5,000	
100	AL-17-50-0-C	UV Black Nylon							
100	AL-21-50-9-C	Natural Nylon	21.68/550.67	.188/4.775	.060/1.524	50 lb. 222 n.	UL	1,000	
100	AL-21-50-0-C	UV Black Nylon							

Tolerance: .xxx = +.005, .xx = +.015, 17" & 21" made in TW, Sold in case quantities

## Heavy Duty 120 lb. Cable Ties

Per Bag	ACT Part Number	Color & Material	Length Inch/mm	Width Inch/mm	Thickness Inch/mm	Tie Tensile	Diameter Inch/mm	UL-CSA Mil-Spec	Per Case
100	AL-08-120-9-C	Natural Nylon	8.70/220.98	.300/7.620	.076/1.930	120 lb. 534 n.	2.06/52.3	UL-CSA	3,000
100	AL-08-120-0-C	UV Black Nylon							
100	AL-08-120-30-C	Heat Stabilized UV Black Nylon							
100	AL-14-120-9-C	Natural	15.09/383.36	.300/7.620	.076/1.930	120 lb. 534 n.	4.06/103.1	UL-CSA MS3367-3*	2,000
50	AL-14-120-9-L	Nylon							
100	AL-14-120-0-C	UV Black							
50	AL-14-120-0-L	Nylon							
100	AL-14-120-30-C	Heat Stabilized							
50	AL-14-120-30-L	UV Black Nylon							
50	AL-18-120-9-L	Natural Nylon	18.25/463.55	.302/7.670	.083/2.108	120 lb. 534 n.	5.00/127.0	UL-CSA	1,000
50	AL-18-120-0-L	UV Black Nylon							
50	AL-24-120-9-L	Natural Nylon	24.50/622.30	.302/7.670	.083/2.108	120 lb. 534 n.	7.00/177.8	UL-CSA	500
50	AL-24-120-0-L	UV Black Nylon							
50	AL-30-120-9-L	Natural Nylon	30.87/784.22	.302/7.670	.083/2.108	120 lb. 534 n.	9.00/228.6	UL-CSA MS3367-6*	500
50	AL-30-120-0-L	UV Black Nylon							
50	AL-36-120-9-L	Natural Nylon	37.12/942.97	.302/7.670	.083/2.108	120 lb. 534 n.	11.00/279.4	UL-CSA	500
50	AL-36-120-0-L	UV Black Nylon							

Tolerance: .xxx = +.005, .xx = +.015, Sold in case quantities

## Extra Heavy Duty 175 lb. Cable Ties

Per Bag	ACT Part Number	Color & Material	Length Inch/mm	Width Inch/mm	Thickness Inch/mm	Tie Tensile	Diameter Inch/mm	UL-CSA Mil-Spec	Per Case
50	AL-24-175-9-L	Natural Nylon	25.25/641.35	.340/8.636	.090/2.286	175 lb. 778 n.	7.18/182.3	UL-CSA UL 181B-C MS3367-10	500
50	AL-24-175-0-L	UV Black Nylon							
50	AL-36-175-9-L	Natural Nylon	37.25/946.15	.340/8.636	.090/2.286	175 lb. 778 n.	11.00/279.4	UL-CSA UL 181B-C MS3367-13	500
50	AL-36-175-0-L	UV Black Nylon							
50	AL-48-175-9-L	Natural Nylon	48.56/1233.4	.340/8.636	.090/2.286	175 lb. 778 n.	14.50/368.3	UL-CSA UL 181B-C MS3367-16	500
50	AL-48-175-8-L	Gray Nylon							
50	AL-48-175-0-L	UV Black Nylon							

Tolerance: .xxx = +/- .005, .xx = +/- .015, Sold in case quantities

## 250 lb. Cable Ties

Per Bag	ACT Part Number	Color & Material	Length Inch/mm	Width Inch/mm	Thickness Inch/mm	Tie Tensile	Diameter Inch/mm	UL-CSA Mil-Spec	Per Case
100	AL-22-250-9-C	Natural Nylon	21.73/552.0	.494/12.54	.077/1.960	250 lb. 1,150 n.	5.74/146.0	UL	500
100	AL-22-250-0-C	UV Black Nylon							

Tolerance: .xxx = +/- .005, .xx = +/- .015, Made in TW, Sold in case quantities

## SPECIALTY CABLE TIES



### Color Codes

1 = Brown	8 = Gray
2 = Red	11 = Fluorescent Green
3 = Orange	12 = Fluorescent Pink
4 = Yellow	13 = Fluorescent Yellow
5 = Green	14 = Fluorescent Orange
6 = Blue	15 = Fluorescent Blue
7 = Purple	18 = Pink



## Color Cable Ties

Per Bag	ACT Part Number	Color	Length Inch/mm	Width Inch/mm	Thickness Inch/mm	Tie Tensile	Diameter Inch/mm	Mil-Spec	Per Case
100	AL-04-18-#-C	Ref. Chart	4.12/104.77	.095/2.413	.042/1.066	18 lb./80 n.	.875/22.2	MS3367-4*	10,000
100	AL-05-40-#-C	Ref. Chart	5.84/148.33	.140/3.556	.049/1.244	40 lb./178 n.	1.437/36.4	MS3367-5*	5,000
100	AL-08-40-#-C	Ref. Chart	8.875/225.42	.140/3.556	.049/1.244	40 lb./178 n.	2.375/60.3		5,000
100	AL-07-50-#-C	Ref. Chart	7.56/192.07	.180/4.572	.052/1.320	50 lb./222 n.	1.875/47.6	MS3367-1*	5,000
100	AL-11-50-#-C	Ref. Chart	11.25/285.75	.180/4.572	.052/1.320	50 lb./222 n.	3.062/77.7	MS3367-7*	5,000
100	AL-14-50-#-C	Ref. Chart	14.25/361.95	.180/4.572	.052/1.320	50 lb./222 n.	4.00/101.6	MS3367-2*	5,000
100	AL-14-120-#-C	Ref. Chart	15.09/383.36	.300/7.620	.076/1.930	120 lb./534 n.	4.06/103.1	MS3367-3*	2,000

Tolerance: .xxx = +/- .005, .xx = +/- .015, 14" 120 lb. is not available in brown and fluorescent yellow, Sold in case quantities

UL Listed for Air Handling Spaces. CSA approved. \*Mil-Spec does not apply to fluorescent colors.

## Metal Detectable Cable Ties

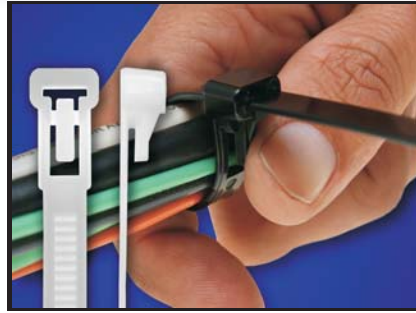
Per Bag	ACT Part Number	Color	Length Inch/mm	Width Inch/mm	Thickness Inch/mm	Tie Tensile	Diameter Inch/mm	Per Case
100	AL-04-18-MD-22-C	Teal	4.12/104.77	.095/2.413	.042/1.066	18 lb./80 n.	.874/22.2	10,000
100	AL-08-40-MD-22-C	Teal	8.875/225.42	.140/3.556	.049/1.244	40 lb./178 n.	2.375/60.3	10,000
100	AL-07-50-MD-22-C	Teal	7.56/192.07	.180/4.572	.052/1.320	50 lb./222 n.	1.875/47.6	10,000
100	AL-11-50-MD-22-C	Teal	11.25/285.75	.180/4.572	.052/1.320	50 lb./222 n.	3.062/77.7	5,000
100	AL-14-50-MD-22-C	Teal	14.25/361.95	.180/4.572	.052/1.320	50 lb./222 n.	4.00/101.6	5,000
100	AL-14-120-MD-22-C	Teal	15.09/383.36	.300/7.620	.076/1.930	120 lb./534 n.	4.06/103.1	2,000

Tolerance: .xxx = +/- .005, .xx = +/- .015, Sold in bag quantities

- Metal Detectable Material complies with the compositional requirements of US FDA regulations for Direct Food Contact; 21 CFR 177.1500 and 21 CFR 184.1375.
- The settings on metal detectable machines need to be adjusted and monitored for wet or dry products or environments, ferrous and non ferrous metals, type of food/products, packaging materials, speed and orientation of scanned product.
- The use of metal detectable products demonstrate that due diligence and precautionary measurement have been taken to prevent contaminants in your products. The user of the metal detectable cable ties and mounts is liable to adjust all setting on their detection equipment to determine the suitability of use. The user is responsible to identify specific limitations for the application and to ensure that the suitable processes are used to conform in every aspect to the FDA regulations.



Extended Pawl Release



Tab Release



## Extended Pawl Releasable Cable Ties

Per Bag	ACT Part Number	Color & Material	Length Inch/mm	Width Inch/mm	Thickness Inch/mm	Tie Tensile	Diameter Inch/mm	UL-CSA Mil-Spec	Per Case
100	AL-07-50-RL-9-C	Natural Nylon	7.560/192.07	.180/4.572	.052/1.320	50 lb. 222 n.	1.875/47.6	*	5,000
100	AL-07-50-RL-0-C	UV Black Nylon							
100	AL-11-50-RL-9-C	Natural Nylon	11.25/285.75	.180/4.572	.052/1.320	50 lb. 222 n.	3.062/77.7	*	5,000
100	AL-11-50-RL-0-C	UV Black Nylon							
100	AL-14-50-RL-9-C	Natural Nylon	14.25/361.95	.180/4.572	.052/1.320	50 lb. 222 n.	4.00/101.6	*	5,000
100	AL-14-50-RL-0-C	UV Black Nylon							

Tolerance: .xxx = +/- .005, .xx = +/- .015 Sold in case quantities. Colors Available by Special Order.

\*New Product Line - UL Testing in Progress

## Tab Releasable Cable Ties

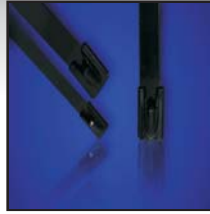
Per Bag	ACT Part Number	Color & Material	Length Inch/mm	Width Inch/mm	Thickness Inch/mm	Tie Tensile	Diameter Inch/mm	FU-CSA Mil-Spec	Per Case
100	AL-05-50-RL-9-C	Natural Nylon	5.906/150.0	.299/7.60	.051/1.300	50 lb. 222 n.	1.25/32.0	FU	2,000
100	AL-05-50-RL-0-C	UV Black Nylon							
100	AL-08-50-RL-9-C	Natural Nylon	7.990/203.0	.299/7.60	.051/1.300	50 lb. 222 n.	1.81/46.0	FU	5,000
100	AL-08-50-RL-0-C	UV Black Nylon							
100	AL-12-50-RL-9-C	Natural Nylon	11.930/303.0	.299/7.60	.051/1.300	50 lb. 222 n.	2.87/73.0	FU	3,000
100	AL-12-50-RL-0-C	UV Black Nylon							

Tolerance: .xxx = +/- .005, .xx = +/- .015 Made in TW. Sold in case quantities.

## Mounting Hole Cable Ties

Per Bag	ACT Part Number	Color & Material	Length Inch/mm	Width Inch/mm	Thickness Inch/mm	Tie Tensile	Screw Size	Diameter Inch/mm	Hole Diameter Inch/mm	Per Case
100	AL-05-30-MH-9-C	Natural Nylon	5.8/149.2	.138/3.505	.045/1.143	40 lb. 180 n.	#8	1.25/31.7	.175/4.44	10,000
100	AL-05-30-MH-0-C	UV Black Nylon								
1,000	AL-07-50-MH-9-M	Natural Nylon	8.0/203.2	.177/4.495	.052/1.320	50 lb. 222 n.	#10	1.75/44.4	.208/5.28	5,000
100	AL-07-50-MH-9-C	Nylon								
1,000	AL-07-50-MH-0-M	UV Black Nylon								
100	AL-07-50-MH-0-C	Nylon								
100	AL-11-50-MH-9-C	Natural Nylon	11.5/292.1	.177/4.495	.053/1.346	50 lb. 222 n.	#10	3.00/76.2	.206/5.23	5,000
100	AL-11-50-MH-0-C	UV Black Nylon								
100	AL-14-50-MH-9-C	Natural Nylon	14.5/368.3	.177/4.495	.053/1.346	50 lb. 222 n.	#10	4.00/101.6	.206/5.23	5,000
100	AL-14-50-MH-0-C	UV Black Nylon								
100	AL-14-120-MH-9-C	Natural Nylon	15.7/400.0	.298/7.569	.075/1.905	120 lb. 534 n.	1/4"	4.06/103.1	.256/6.50	2,000
100	AL-14-120-MH-0-C	UV Black Nylon								

Tolerance: .xxx = +/- .005, .xx = +/- .015, 5" made in TW, Sold in case quantities



## 316 Coated Stainless Steel Cable Ties

Per Bag	ACT Part Number	Material	Length Inch/mm	Width Inch/mm	Metal Thickness	Tie Tensile	Diameter Inch/mm	UL-CSA Mil-Spec	Per Case
100	AL-08-100-SS-CT-C	Stainless Steel	7.87/200.0	.180/4.6	.009"/.25mm	150 lb.	1.96/50.0	UL	1,000
100	AL-14-100-SS-CT-C	Stainless Steel	14.17/360.0	.180/4.6	.009"/.25mm	150 lb.	3.93/100.0	UL	1,000
100	AL-20-100-SS-CT-C	Stainless Steel	20.47/520.0	.180/4.6	.009"/.25mm	150 lb.	5.90/150.0	UL	1,000
100	AL-27-100-SS-CT-C	Stainless Steel	26.77/680.0	.180/4.6	.009"/.25mm	150 lb.	7.87/200.0	UL	1,000
100	AL-08-250-SS-CT-C	Stainless Steel	7.87/200.0	.310/7.9	.009"/.25mm	300 lb.	1.96/50.0	UL	1,000
100	AL-14-250-SS-CT-C	Stainless Steel	14.17/360.0	.310/7.9	.009"/.25mm	300 lb.	3.93/100.0	UL	1,000
100	AL-20-250-SS-CT-C	Stainless Steel	20.47/520.0	.310/7.9	.009"/.25mm	300 lb.	5.90/150.0	UL	1,000
100	AL-27-250-SS-CT-C	Stainless Steel	26.77/680.0	.310/7.9	.009"/.25mm	300 lb.	7.87/200.0	UL	1,000

Thickness Including Coating .016"/.40mm Tolerance:  $\pm .003"/0.076mm$ , Sold in bag quantities, 150 lb = 665 n / 300 lb = 1335 n

## 316 Uncoated Stainless Steel Cable Ties

Per Bag	ACT Part Number	Material	Length Inch/mm	Width Inch/mm	Metal Thickness	Tie Tensile	Diameter Inch/mm	UL-CSA Mil-Spec	Per Case
100	AL-08-100-SS-C	Stainless Steel	7.87/200.0	.180/4.6	.009"/.25mm	150 lb.	1.96/50.0	UL	1,000
100	AL-14-100-SS-C	Stainless Steel	14.17/360.0	.180/4.6	.009"/.25mm	150 lb.	3.93/100.0	UL	1,000
100	AL-20-100-SS-C	Stainless Steel	20.47/520.0	.180/4.6	.009"/.25mm	150 lb.	5.90/150.0	UL	1,000
100	AL-27-100-SS-C	Stainless Steel	26.77/680.0	.180/4.6	.009"/.25mm	150 lb.	7.87/200.0	UL	1,000
100	AL-08-250-SS-C	Stainless Steel	7.87/200.0	.310/7.9	.009"/.25mm	300 lb.	1.96/50.0	UL	1,000
100	AL-14-250-SS-C	Stainless Steel	14.17/360.0	.310/7.9	.009"/.25mm	300 lb.	3.93/100.0	UL	1,000
100	AL-20-250-SS-C	Stainless Steel	20.47/520.0	.310/7.9	.009"/.25mm	300 lb.	5.90/150.0	UL	1,000
100	AL-27-250-SS-C	Stainless Steel	26.77/680.0	.310/7.9	.009"/.25mm	300 lb.	7.87/200.0	UL	1,000

Tolerance:  $\pm .003"/0.076mm$ , Sold in bag quantities, 150 lb = 665 n / 300 lb = 1335 n

## 316 Coated Ladder Stainless Steel Cable Ties

Per Bag	ACT Part Number	Material	Length Inch/mm	Width Inch/mm	Metal Thickness	Tie Tensile	Diameter Inch/mm	UL-CSA Mil-Spec	Per Case
100	AL-08-100-SS-LD-CT-C	Stainless Steel	7.87/200.0	.270/7.0	.011"/.30mm	250 lb.	2.36/60.0	UL	1,000
100	AL-14-100-SS-LD-CT-C	Stainless Steel	14.17/360.0	.270/7.0	.011"/.30mm	250 lb.	4.13/105.0	UL	1,000
100	AL-24-100-SS-LD-CT-C	Stainless Steel	24.01/610.0	.270/7.0	.011"/.30mm	250 lb.	5.90/150.0	UL	1,000
100	AL-30-100-SS-LD-CT-C	Stainless Steel	29.52/750.0	.270/7.0	.011"/.30mm	250 lb.	7.87/200.0	UL	1,000
100	AL-08-250-SS-LD-CT-C	Stainless Steel	7.87/200.0	.470/12.0	.013"/.35mm	450 lb.	2.36/60.0	UL	1,000
100	AL-14-250-SS-LD-CT-C	Stainless Steel	14.17/360.0	.470/12.0	.013"/.35mm	450 lb.	4.13/105.0	UL	1,000
100	AL-24-250-SS-LD-CT-C	Stainless Steel	24.01/610.0	.470/12.0	.013"/.35mm	450 lb.	5.90/150.0	UL	1,000
100	AL-30-250-SS-LD-CT-C	Stainless Steel	29.52/750.0	.470/12.0	.013"/.35mm	450 lb.	7.87/200.0	UL	1,000

Thickness Including Coating .018"/.45mm Tolerance:  $\pm .003"/0.076mm$ , Made in SG, Sold in bag quantities, 100 lb = 444 n / 250 lb = 1112 n

## 316 Uncoated Ladder Stainless Steel Cable Ties

Per Bag	ACT Part Number	Material	Length Inch/mm	Width Inch/mm	Metal Thickness	Tie Tensile	Diameter Inch/mm	UL-CSA Mil-Spec	Per Case
100	AL-08-100-SS-LD-C	Stainless Steel	7.87/200.0	.270/7.0	.011"/.30mm	250 lb.	2.36/60.0	UL	1,000
100	AL-14-100-SS-LD-C	Stainless Steel	14.17/360.0	.270/7.0	.011"/.30mm	250 lb.	4.13/105.0	UL	1,000
100	AL-24-100-SS-LD-C	Stainless Steel	24.01/610.0	.270/7.0	.011"/.30mm	250 lb.	5.90/150.0	UL	1,000
100	AL-30-100-SS-LD-C	Stainless Steel	29.52/750.0	.270/7.0	.011"/.30mm	250 lb.	7.87/200.0	UL	1,000
100	AL-08-250-SS-LD-C	Stainless Steel	7.87/200.0	.470/12.0	.013"/.35mm	450 lb.	2.36/60.0	UL	1,000
100	AL-14-250-SS-LD-C	Stainless Steel	14.17/360.0	.470/12.0	.013"/.35mm	450 lb.	4.13/105.0	UL	1,000
100	AL-24-250-SS-LD-C	Stainless Steel	24.01/610.0	.470/12.0	.013"/.35mm	450 lb.	5.90/150.0	UL	1,000
100	AL-30-250-SS-LD-C	Stainless Steel	29.52/750.0	.470/12.0	.013"/.35mm	450 lb.	7.87/200.0	UL	1,000

Thickness Including Coating .018"/.45mm Tolerance:  $\pm .003"/0.076mm$ , Made in SG, Sold in bag quantities, 100 lb = 444 n / 250 lb = 1112 n



## 316 Coated Spring Stainless Steel Cable Ties

Per Bag	ACT Part Number	Material	Length Inch/mm	Width Inch/mm	Metal Thickness	Tie Tensile	Diameter Inch/mm	UL-CSA Mil-Spec	Per Case
100	AL-08-100-SS-SP-CT-C	Stainless Steel	7.87/200.0	.180/4.6	.009"/.25mm	150 lb.	1.97/50.0	UL	1,000
100	AL-14-100-SS-SP-CT-C	Stainless Steel	14.17/360.0	.180/4.6	.009"/.25mm	150 lb.	3.94/100.0	UL	1,000
100	AL-20-100-SS-SP-CT-C	Stainless Steel	20.47/520.0	.180/4.6	.009"/.25mm	150 lb.	5.90/150.0	UL	1,000
100	AL-08-250-SS-SP-CT-C	Stainless Steel	7.87/200.0	.310/7.9	.009"/.25mm	300 lb.	1.97/50.0	UL	1,000
100	AL-14-250-SS-SP-CT-C	Stainless Steel	14.17/360.0	.310/7.9	.009"/.25mm	300 lb.	3.94/100.0	UL	1,000
100	AL-20-250-SS-SP-CT-C	Stainless Steel	20.47/520.0	.310/7.9	.009"/.25mm	300 lb.	5.90/150.0	UL	1,000

Thickness Including Coating .016"/.40mm Tolerance:  $\pm .003$ "/0.076mm, Made in SG, Sold in bag quantities, 100 lb = 444 n / 250 lb = 1112 n

## 316 Uncoated Spring Stainless Steel Cable Ties

Per Bag	ACT Part Number	Material	Length Inch/mm	Width Inch/mm	Metal Thickness	Tie Tensile	Diameter Inch/mm	UL-CSA Mil-Spec	Per Case
100	AL-08-100-SS-SP-C	Stainless Steel	7.87/200.0	.180/4.6	.009"/.25mm	150 lb.	1.97/50.0	UL	1,000
100	AL-14-100-SS-SP-C	Stainless Steel	14.17/360.0	.180/4.6	.009"/.25mm	150 lb.	3.94/100.0	UL	1,000
100	AL-20-100-SS-SP-C	Stainless Steel	20.47/520.0	.180/4.6	.009"/.25mm	150 lb.	5.90/150.0	UL	1,000
100	AL-08-250-SS-SP-C	Stainless Steel	7.87/200.0	.310/7.9	.009"/.25mm	300 lb.	1.97/50.0	UL	1,000
100	AL-14-250-SS-SP-C	Stainless Steel	14.17/360.0	.310/7.9	.009"/.25mm	300 lb.	3.94/100.0	UL	1,000
100	AL-20-250-SS-SP-C	Stainless Steel	20.47/520.0	.310/7.9	.009"/.25mm	300 lb.	5.90/150.0	UL	1,000

Tolerance:  $\pm .003$ "/.076mm, Made in SG, Sold in bag quantities, 100 lb = 444 n / 250 lb = 1112 n

## Identification Cable Ties

Per Bag	ACT Part Number	Color & Material	Length Inch/mm	Width Inch/mm	Thickness Inch/mm	Tie Tensile	Pad Size	Diameter Inch/mm	UL CSA	Per Case
100	AL-04-18-ID-9-C	Natural Nylon	4.0/103.0	.094/2.40	.045/1.14	18 lb.	.30" x .96"	.820/21.0	UL	5,000
100	AL-04-18-FL-9-C	Natural Nylon	4.3/110.5	.098/2.50	.047/1.20	18 lb.	.30" x .97"	.984/25.0	UL	5,000
100	AL-07-50-ID-9-C	Natural Nylon	7.9/201.0	.180/4.58	.055/1.397	50 lb.	.5" x 1.06"	1.81/46.0	UL	5,000
100	AL-07-50-ID-0-C	UV Black Nylon								
100	AL-14-50-ID-9-C	Natural Nylon	13.6/346.0	.187/4.75	.055/1.397	50 lb.	.5" x 1.06"	3.77/96.0	UL	5,000

Tolerance:  $\pm .03$ "/.76mm, Made in TW, Sold in case quantities

## Beaded Cable Ties

Per Bag	ACT Part Number	Color & Material	Length Inch/mm	Head Width Inch/mm	Head Length Inch/mm	Bead Dia. Inch/mm	Bead To Bead Inch/mm	Max. Bundle Inch/mm	Per Case
100	AL-04-BD-9-C	Natural Nylon	4.7/120.0	.20/5.3	.35/8.89	.09/2.4	.13/3.30	1.8/30.0	10,000
100	AL-06-BD-9-C	Natural Nylon	5.9/150.0	.29/7.5	.57/14.47	.11/2.9	.17/4.31	1.5/39.0	10,000
100	AL-08-BD-9-C	Natural Nylon	8.8/226.0	.38/9.8	.85/21.59	.15/3.8	.29/7.36	2.48/63.0	5,000

Made in TW, Sold in case quantities



## Cold Weather Cable Ties

Per Bag	ACT Part Number	Color	Length Inch/mm	Width Inch/mm	Thickness Inch/mm	Tie Tensile	Diameter Inch/mm	RU CSA	Per Case
100	AL-07-50-CW-0-C	UV Black	7.56/192.07	.180/4.572	.052/1.320	50 lb./222 n.	1.875/47.6	RU	10,000
100	AL-11-50-CW-0-C	UV Black	11.25/285.75	.180/4.572	.052/1.320	50 lb./222 n.	3.06/77.7	RU	5,000
100	AL-14-50-CW-0-C	UV Black	14.25/361.95	.180/4.572	.052/1.320	50 lb./222 n.	4.00/101.6	RU	5,000
100	AL-14-120-CW-0-C	UV Black	15.09/383.36	.300/7.620	.076/1.930	120 lb./534 n.	4.06/103.1	RU	2,000

Tolerance: .xxx = +/-0.005, .xx = +/-0.015, Sold in case quantities

## Air Handling Cable Ties

Per Bag	ACT Part Number	Color	Length Inch/mm	Width Inch/mm	Thickness Inch/mm	Tie Tensile	Diameter Inch/mm	UL CSA	Per Case
100	AL-07-50-35-C	Burgundy	7.56/192.07	.180/4.572	.052/1.320	50 lb./222 n.	1.875/47.6	UL-CSA	5,000
100	AL-11-50-35-C	Burgundy	11.25/285.75	.180/4.572	.052/1.320	50 lb./222 n.	3.062/77.7	UL-CSA	5,000
100	AL-14-50-35-C	Burgundy	14.25/361.95	.180/4.572	.052/1.320	50 lb./222 n.	4.00/101.6	UL-CSA	5,000

Burgundy Color Preferred By Building Inspectors, UL Listed, Suitable for use in Air Handling Spaces(Plenums) in accordance with the Section 300.22 (C) and (D) of the National Electrical Code and Rules 12-010 (3), (4), and (5) and 12-020 of the Canadian Electrical Code, Part 1;

Tolerance: .xxx = +/-0.005, .xx = +/-0.015, Sold in case quantities

## Double Head Cable Ties

Per Bag	ACT Part Number	Color & Material	Length Inch/mm	Width Inch/mm	Thickness Inch/mm	Tie Tensile	Diameter 1		Diameter 2		Per Case
							Max.	Min.	Max.	Min.	
100	AL-08-50-DH-9-C	Natural Nylon	8.85/225.0	.185/4.7	.051/1.3	50 lb./222 n.* 40 lb./178 n.*	2.32"	.098"	2.04"	.079"	5,000
100	AL-08-50-DH-0-C	UV Black Nylon									
100	AL-11-50-DH-9-C	Natural Nylon	11.81/300.0	.185/4.7	.051/1.3	50 lb./222 n.* 40 lb./178 n.*	3.26"	.098"	2.99"	.079"	5,000
100	AL-11-50-DH-0-C	UV Black Nylon									
100	AL-14-50-DH-9-C	Natural Nylon	14.56/370.0	.185/4.7	.051/1.3	50 lb./222 n.* 40 lb./178 n.*	4.13"	.098"	3.85"	.079"	5,000
100	AL-14-50-DH-0-C	UV Black Nylon									

Tolerance: .xxx = +/-0.005, .xx = +/-0.015, Made in TW, \*D1 tensile rating 50 lb. / D2 tensile rating 40 lb. Sold in case quantities

## Push Mount Cable Ties

Per Bag	ACT Part Number	Color & Material	Length Inch/mm	Width Inch/mm	Thickness Inch/mm	Tie Tensile	Diameter Inch/mm	Hole Size Inch/mm	Panel Inch/mm	Per Case
1,000	AL-06-40-PMW-9-M	Natural	6.2/157.9	.140/3.55	.047/1.19	40 lb./178 n.	1.43/36.3	.181/4.59	.09/2.36	10,000
100	AL-06-40-PMW-9-C	Nylon								
1,000	AL-06-40-PMW-0-M	UV Black								
100	AL-06-40-PMW-0-C	Nylon								
1,000	AL-06-40-PMW-30-M	Heat Stabilized	7.9/203.0	.189/4.80	.047/1.19	50 lb./222 n.	1.87/47.6	.252/6.40	.14/3.55	5,000
100	AL-06-40-PMW-30-C	Black Nylon								
100	AL-07-50-PM-9-C	Natural Nylon	7.9/201.0	.189/4.80	.063/1.60	50 lb./222 n.	1.87/47.6	.236/6.00	.11/2.80	5,000
100	AL-07-50-PM-0-C	Black Nylon								
100	AL-07-50-PMW-9-C	Natural Nylon	7.9/201.0	.189/4.80	.063/1.60	50 lb./222 n.	1.87/47.6	.236/6.00	.11/2.80	5,000
100	AL-07-50-PMW-0-C	Black Nylon								

Tolerance: +/-0.03"/.76mm, 7" Made in TW, Sold in case quantities





## Impact Resistant Cable Ties

Per Bag	ACT Part Number	Length Inch/mm	Width Inch/mm	Thickness Inch/mm	Tie Tensile	Diameter Inch/mm	Per Case
100	AL-05-40-IT-30-C	5.84/148.33	.14/3.55	.04/1.24	40 lb./178 n.	1.43/36.4	10,000
1000	AL-05-40-IT-30-M						
100	AL-07-50-IT-30-C	7.56/192.07	.18/4.57	.05/1.32	50 lb./222 n.	1.87/47.6	10,000
1000	AL-07-50-IT-30-M						
100	AL-11-50-IT-30-C	11.25/285.75	.18/4.57	.05/1.32	50 lb./222 n.	3.06/77.7	5,000
500	AL-11-50-IT-30-D						
100	AL-14-50-IT-30-C	14.25/361.95	.18/4.57	.05/1.32	50 lb./222 n.	4.00/101.6	5,000
500	AL-14-50-IT-30-D						
100	AL-08-120-IT-30-C	8.70/220.98	.30/7.62	.07/1.93	120 lb./534 n.	2.06/52.3	3,000
100	AL-14-120-IT-30-C	15.09/383.36	.30/7.62	.07/1.93	120 lb./534 n.	4.06/103.1	2,000
100	AL-07-50-MH-IT-30-C	8.00/203.20	.17/4.49	.05/1.32	50 lb./222 n.	1.75/44.4	5,000
100	AL-14-120-MH-IT-30-C	15.75/400.05	.29/7.56	.07/1.90	120 lb./534 n.	4.06/103.1	2,000

UV Black Heat Stabilized Impact Resistant Nylon Material  
Tolerance: .xxx = +/- .005, .xx = +/- .015, Sold in case quantities

## Tote Box / Restricted Bundle Cable Ties

Per Bag	ACT Part Number	Color & Material	Length Inch/mm	Width Inch/mm	Thickness Inch/mm	Tie Tensile	Restricted Diameter	Per Case
1,000	AL-05-40-TB-3-M	Orange Nylon	5.84/148.33	.140/3.556	.049/1.244	40 lb./178 n.	.75/19.05	20,000

Tolerance: .xxx = +/- .005, .xx = +/- .015, 2 week lead time and 240,000 minimum purchase, Other colors available, Sold in case quantities

## Polypropylene Cable Ties

Per Bag	ACT Part Number	Color	Length Inch/mm	Width Inch/mm	Thickness Inch/mm	Tie Tensile	Diameter Inch/mm	Per Case
1,000	AL-08-50-PP-9-M	Natural	7.5/191.0	.190/4.50	.055/1.40	35 lb./155 n.	1.75/44.4	5,000
1,000	AL-08-50-PP-0-M	Black						

Tolerance: +/- .03"/.76mm Tensile strength +/- 15 lb. due to material, Other sizes available, 2 week lead time, Sold in case quantities

# CABLE TIE ACCESSORIES

## Screw Mounts

Per Bag	ACT Part Number	Color & Material	Length Inch/mm	Height Inch/mm	Width Inch/mm	Slot Height Inch/mm	Slot Width Inch/mm	Screw Size	UL-CSA Mil-Spec	Per Case
100	AL-SM0-9-C	Natural Nylon	.60/15.24	.27/6.85	.38/9.65	.06/1.65	.20/5.08	#4	UL-CSA	1,000
100	AL-SM0-0-C	UV Black Nylon								
100	AL-SM1-9-C	Natural Nylon	.60/15.24	.27/6.85	.38/9.65	.06/1.65	.20/5.08	#6	UL-CSA	1,000
100	AL-SM1-0-C	UV Black Nylon								
100	AL-SM8-9-C	Natural Nylon	.60/15.24	.27/6.85	.38/9.65	.06/1.65	.20/5.08	#8	UL-CSA	1,000
100	AL-SM8-0-C	UV Black Nylon								
100	AL-SM2-9-C	Natural Nylon	.90/22.86	.38/9.65	.63/16.0	.12/3.17	.35/8.89	1/4"	UL-CSA	1,000
100	AL-SM2-0-C	UV Black Nylon								
100	AL-SM3-9-C	Natural Nylon	.90/22.86	.38/9.65	.63/16.0	.12/3.17	.35/8.89	#10	UL-CSA	1,000
100	AL-SM3-0-C	UV Black Nylon								

Tolerance: +/- .03"/.76mm, Sold in case quantities



## Metal Detectable Screw Mounts

Per Bag	ACT Part Number	Color	Length Inch/mm	Height Inch/mm	Width Inch/mm	Slot Width Inch/mm	Screw Size	Per Case
100	AL-SM0-MD-22-C	Teal	.60/15.24	.27/6.85	.38/9.65	.20/5.08	#4	1,000
100	AL-SM1-MD-22-C	Teal	.60/15.24	.27/6.85	.38/9.65	.20/5.08	#6	1,000
100	AL-SM8-MD-22-C	Teal	.60/15.24	.27/6.85	.38/9.65	.20/5.08	#8	1,000
100	AL-SM2-MD-22-C	Teal	.90/22.86	.38/9.65	.63/16.0	.35/8.89	1/4"	1,000
100	AL-SM3-MD-22-C	Teal	.90/22.86	.38/9.65	.63/16.0	.35/8.89	#10	1,000

## Metal Detectable Mounting Pads

Per Bag	ACT Part Number	Color	Tape Adhesive	Length Inch/mm	Thickness Inch/mm	Slot Width Inch/mm	Screw Size	Per Case
100	AL-MP-750-MD-22-C	Teal	Rubber Base	.74/18.79	.19/4.82	.20/5.08	#4	1,000
100	AL-MP-750-NT-MD-22-C	Teal	No Tape	.74/18.79	.19/4.82	.20/5.08	#4	1,000
100	AL-MP-1000-MD-22-C	Teal	Rubber Base	.99/25.14	.20/5.08	.20/5.08	#6	1,000
100	AL-MP-1000-NT-MD-22-C	Teal	No Tape	.99/25.14	.20/5.08	.20/5.08	#6	1,000

Tolerance: .xxx = +/-0.005, .xx = +/-0.015, Sold in bag quantities

- Metal Detectable Material complies with the compositional requirements of US FDA regulations for Direct Food Contact; 21 CFR 177.1500 and 21 CFR 184.1375.
- Metal Detectable Mounting Pads with Adhesive; Adhesive Applications polyethylene foam tape products meet the requirements FDA CFR 21 Part 175 - Indirect Food Additives: Adhesives and Components of Coatings Sub part B 175.125
- The settings on metal detectable machines need to be adjusted and monitored for wet or dry products or environments, ferrous and non ferrous metals, type of food/products, packaging materials, speed and orientation of scanned product.
- The use of metal detectable products demonstrate that due diligence and precautionary measurement have been taken to prevent contaminants in your products. The user of the metal detectable cable ties and mounts is liable to adjust all setting on their detection equipment to determine the suitability of use. The user is responsible to identify specific limitations for the application and to ensure that the suitable processes are used to conform in every aspect to the FDA regulations.

## Rubber Adhesive Mounting Pads

Per Bag	ACT Part Number	Color & Material	Length Inch/mm	Height Inch/mm	Slot Height Inch/mm	Slot Width Inch/mm	Screw Size	FU-CSA Mil-Spec	Per Case
100	AL-MP-750-9-C	Natural Nylon	.74/18.79	.19/4.82	.05/1.27	.20/5.08	#4	FU-CSA	1,000
100	AL-MP-750-0-C	Black Nylon							
100	AL-MP-1000-9-C	Natural Nylon	.99/25.14	.20/5.08	.06/1.52	.20/5.08	#6	FU-CSA	1,000
100	AL-MP-1000-0-C	Black Nylon							

## Acrylic Adhesive Mounting Pads

Per Bag	ACT Part Number	Color & Material	Length Inch/mm	Height Inch/mm	Slot Height Inch/mm	Slot Width Inch/mm	Screw Size	FU-CSA Mil-Spec	Per Case
100	AL-MPA-750-9-C	Natural Nylon	.74/18.79	.19/4.82	.05/1.27	.20/5.08	#4	FU-CSA	1,000
100	AL-MPA-750-0-C	Black Nylon							
100	AL-MPA-1000-9-C	Natural Nylon	.99/25.14	.20/5.08	.06/1.52	.20/5.08	#6	FU-CSA	1,000
100	AL-MPA-1000-0-C	Black Nylon							

## Non-Taped Mounting Pads

Per Bag	ACT Part Number	Color & Material	Length Inch/mm	Height Inch/mm	Slot Height Inch/mm	Slot Width Inch/mm	Screw Size	FU-CSA Mil-Spec	Per Case
100	AL-MP-750-NT-9-C	Natural Nylon	.74/18.79	.19/4.82	.05/1.27	.20/5.08	#4	FU-CSA	1,000
100	AL-MP-750-NT-0-C	Black Nylon							
100	AL-MP-1000-NT-9-C	Natural Nylon	.99/25.14	.20/5.08	.06/1.52	.20/5.08	#6	FU-CSA	1,000
100	AL-MP-1000-NT-0-C	Black Nylon							

Tolerance: .xxx = +/-0.005, .xx = +/-0.015, Sold in case quantities



## Mounting Pad Adhesive

Per Clam	ACT Part Number	Color & Material	Grams Per Tube	Approximate Dots Per Tube	Full Cure Time	Per Case
1	AL-MP-ADHESIVE	Clear Cyanoacrylate	20 <sub>net weight</sub>	200	24 Hours	10

Reference MSD sheets for full details, Sold in case quantities Excellent for powder coated substrates.

## Low Profile Screw Mounts

Per Bag	ACT Part Number	Color & Material	Length Inch/mm	Height Inch/mm	Width Inch/mm	Slot Height Inch/mm	Slot Width Inch/mm	Screw Size	Per Case
100	AL-LPM1-9-C	Natural Nylon	.75/19.05	.12/3.04	.50/12.70	.062/1.587	.18/4.57	#8	1,000

Tolerance: +-.03"/.76mm, Made in TW, Sold in case quantities

## Button Mounts

Per Bag	ACT Part Number	Color & Material	Height Inch/mm	Exposed Inch/mm	Shaft Length Inch/mm	Button Dia. Inch/mm	Slot Width Inch/mm	Shaft Dia. Inch/mm	Hole Inch/mm	Per Case
100	AL-BM-0-C	Black Nylon	.535/13.5	.248/6.3	.287/7.3	.634/16.1	.196/5.0	.299/7.6	.25/6.3	1,000

Tolerance: +-.03"/.76mm, Made in TW, Sold in case quantities

## Wing Push Mounts

Per Bag	ACT Part Number	Color & Material	Height Inch/mm	Depth Inch/mm	Wing Width Inch/mm	Head Width Inch/mm	Slot Width Inch/mm	Max. Cable Tie Width	Hole Inch/mm	Per Case
100	AL-PMW1-9-C	Natural Nylon	.68/17.3	.28/7.1	.62/15.8	.37/9.5	.25/6.3	50 lb.	.25/6.3	1,000
100	AL-PMW1-0-C	Black Nylon								
100	AL-PMW-9-C	Natural Nylon	.73/18.6	.37/9.5	.79/20.1	.42/10.7	.31/8.1	120 lb.	.25/6.3	1,000

Tolerance: +-.03"/.76mm, Made in TW, Sold in case quantities

## CABLE TIE TOOLS

### Cable Tie Removal Tools

ACT Part Number	Description
MG-1300	Removes 18 to 250 lb. Cable Ties & Lacing Cord
MG-1400	Removes 18 to 250 lb. Cable Ties & Lacing Cord Strips 10 to 22 awg Wire



MG-1300



MG-1400



AL-100

### Cable Tie Installation Tools

ACT Part Number	Cable Tie Sizes	Cut Off Type
AL-100	18 to 50 lb.	Manual Twist
AL-200	18 to 50 lb.	Automatic
AL-300	120 to 175 lb.	Manual Handle
AL-900	100 to 300 lb. Stainless Steel	Automatic



AL-200



AL-300



AL-900

Made in TW

# ADDITIONAL LINES

Bridge Sleeves



Wall Mounts



Anchor Mounts



Identification Plates



Clamps



Split Loom



Cable Wrap



Wire Stripper



Crimper-Stripper



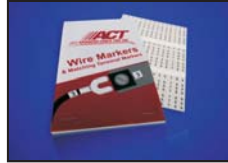
Romex Stripper



ACTPACs



Wire Markers



Terminals



Heat Shrink



Wire Connectors



# MIL-SPEC REFERENCE

Mil-Spec Part Number	ACT Part Number	Color
MS3367-1-0	AL-07-50-0	UV Black
MS3367-1-9	AL-07-50-9	Natural
MS3367-1-1	AL-07-50-1	Brown
MS3367-1-2	AL-07-50-2	Red
MS3367-1-3	AL-07-50-3	Orange
MS3367-1-4	AL-07-50-4	Yellow
MS3367-1-5	AL-07-50-5	Green
MS3367-1-6	AL-07-50-6	Blue
MS3367-1-7	AL-07-50-7	Purple
MS3367-1-8	AL-07-50-8	Gray
MS3367-1-10	AL-07-50-18	Pink
MS3367-1-11	AL-07-50-30	HS Black
MS3367-1-12	AL-07-50-32	HS Natural
MS3367-2-0	AL-14-50-0	UV Black
MS3367-2-9	AL-14-50-9	Natural
MS3367-2-1	AL-14-50-1	Brown
MS3367-2-2	AL-14-50-2	Red
MS3367-2-3	AL-14-50-3	Orange
MS3367-2-4	AL-14-50-4	Yellow
MS3367-2-5	AL-14-50-5	Green
MS3367-2-6	AL-14-50-6	Blue
MS3367-2-7	AL-14-50-7	Purple

Mil-Spec Part Number	ACT Part Number	Color
MS3367-2-8	AL-14-50-8	Gray
MS3367-2-10	AL-14-50-18	Pink
MS3367-2-11	AL-14-50-30	HS Black
MS3367-2-12	AL-14-50-32	HS Natural
MS3367-3-0	AL-14-120-0	UV Black
MS3367-3-9	AL-14-120-9	Natural
MS3367-3-1	AL-14-120-1	Brown
MS3367-3-2	AL-14-120-2	Red
MS3367-3-3	AL-14-120-3	Orange
MS3367-3-4	AL-14-120-4	Yellow
MS3367-3-5	AL-14-120-5	Green
MS3367-3-6	AL-14-120-6	Blue
MS3367-3-7	AL-14-120-7	Purple
MS3367-3-8	AL-14-120-8	Gray
MS3367-3-10	AL-14-120-18	Pink
MS3367-3-11	AL-14-120-30	HS Black
MS3367-3-12	AL-14-120-32	HS Natural
MS3367-4-0	AL-04-18-0	UV Black
MS3367-4-9	AL-04-18-9	Natural
MS3367-4-1	AL-04-18-1	Brown
MS3367-4-2	AL-04-18-2	Red
MS3367-4-3	AL-04-18-3	Orange

Mil-Spec Part Number	ACT Part Number	Color
MS3367-4-4	AL-04-18-4	Yellow
MS3367-4-5	AL-04-18-5	Green
MS3367-4-6	AL-04-18-6	Blue
MS3367-4-7	AL-04-18-7	Purple
MS3367-4-8	AL-04-18-8	Gray
MS3367-4-10	AL-04-18-18	Pink
MS3367-4-11	AL-04-18-30	HS Black
MS3367-4-12	AL-04-18-32	HS Natural
MS3367-5-0	AL-05-40-0	UV Black
MS3367-5-9	AL-05-40-9	Natural
MS3367-5-1	AL-05-40-1	Brown
MS3367-5-2	AL-05-40-2	Red
MS3367-5-3	AL-05-40-3	Orange
MS3367-5-4	AL-05-40-4	Yellow
MS3367-5-5	AL-05-40-5	Green
MS3367-5-6	AL-05-40-6	Blue
MS3367-5-7	AL-05-40-7	Purple
MS3367-5-8	AL-05-40-8	Gray
MS3367-5-10	AL-05-40-18	Pink
MS3367-5-11	AL-05-40-30	HS Black
MS3367-5-12	AL-05-40-32	HS Natural
MS3367-6-0	AL-30-120-0	UV Black

Mil-Spec Part Number	ACT Part Number	Color
MS3367-6-9	AL-30-120-9	Natural
MS3367-7-0	AL-11-50-0	UV Black
MS3367-7-9	AL-11-50-9	Natural
MS3367-7-1	AL-11-50-1	Brown
MS3367-7-2	AL-11-50-2	Red
MS3367-7-3	AL-11-50-3	Orange
MS3367-7-4	AL-11-50-4	Yellow
MS3367-7-5	AL-11-50-5	Green
MS3367-7-6	AL-11-50-6	Blue
MS3367-7-7	AL-11-50-7	Purple
MS3367-7-8	AL-11-50-8	Gray
MS3367-7-10	AL-11-50-18	Pink
MS3367-7-11	AL-11-50-30	HS Black
MS3367-7-12	AL-11-50-32	HS Natural
MS3367-10-0	AL-24-175-0	UV Black
MS3367-10-9	AL-24-175-9	Natural
MS3367-13-0	AL-36-175-0	UV Black
MS3367-13-9	AL-36-175-9	Natural
MS3367-16-0	AL-48-175-0	UV Black
MS3367-16-9	AL-48-175-9	Natural
MS3367-16-8	AL-48-175-8	Gray

**ACT**  
 ADVANCED CABLE TIES, INC.  
 245 Suffolk Lane, Gardner, MA 01440  
 Phone: 800.861.7228 - Fax: 978.630.3999  
 sales@actfs.com

