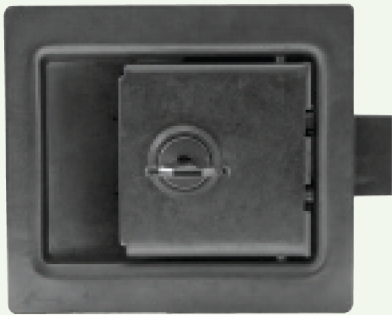


# Lock Options

The standard locking device on all doors, except the fire-rated doors is a screwdriver operated cam latch. All fire-rated doors are supplied with a keyed paddle latch, and are keyed alike. All flush and recessed doors are keyed alike. All security doors are *keyed to specifications*. Karp also provides many other locking devices for unusual requirements on request.

## Fire-Rated Locking Devices

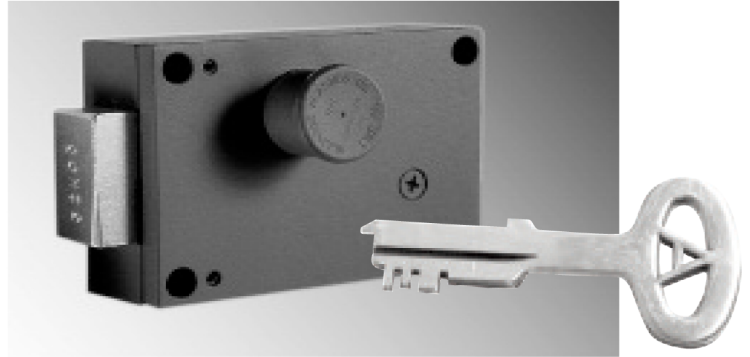


Paddle Latch



Rim Cylinder w/Latch

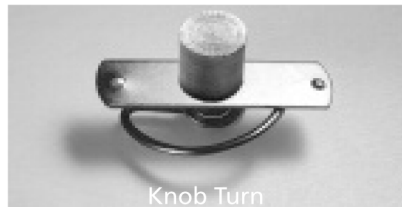
## Detention Lock and Key



## Locks for Flush & Recessed Doors



Paddle Handle



Knob Turn



T-Handle

Lift & Turn  
Compression  
Latch



Lift & Turn  
Compression Latch w/ Key



Cylinder Lock with Dust Shutter



1/2 " Screw  
Driver



1 " Screw  
Driver



Allen Key  
Head



Spanner  
Head

*\*Some locks cannot be used on all product lines.  
Please contact a representative for details.*