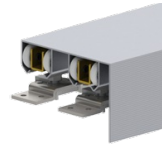


9673 Series and 9674 Series

Heavy Duty Aluminum
Track with 2-5/8" (66 mm) with
Built-in Grooved Fascia and Hardware



Notes:

Interchanges with:

- Built in grooved fascia that measures at 2-5/8" (66 mm)
- Grooved fascia ideal for painting
- For doors 3/4" - 1-3/4"

Additional Notes:

- Stanley S1700F Series/BP150F
- Johnson 134F/138F
- Lawrence 581 Track, HDF520 Series Sets

PRODUCT SPECIFICATIONS

BY-PASS SETS:

- 9673-48 = For two 24" (610 mm) doors
- 9673-60 = For two 30" (762 mm) doors
- 9673-72 = For two 36" (914 mm) doors
- 9673-96 = For two 48" (1219 mm) doors

ALUMINUM TRACK WITH BUILT-IN GROOVED FASCIA:

- 9603-48 = 48" (1194 mm)
- 9603-60 = 60" (1499 mm)
- 9603-72 = 72" (1803 mm)
- 9603-96 = 96" (2413 mm)
- 9603-120 = 120" (3048 mm)
- 9603-144 = 144" (3658 mm)

PARTS BAG:

- 9679 = 125 lb (57 kg); 4 each 9605 Hanger & 9610 Top Mount Plate, 1 each 9909 Guide

PRODUCT SIZE OPTIONS

ITEM #	DESCRIPTION
9673-48	By-Pass Set for two 24 Inch (610mm) Doors
9673-60	By-Pass Set for two 30 Inch (762mm) Doors
9673-72	By-Pass Set for two 36 Inch (914mm) Doors
9673-96	By-Pass Set for two 48 Inch (1219mm) Doors