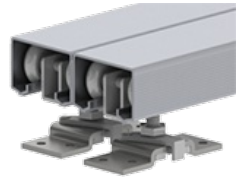


9611 Series and 9612 Series

Heavy Duty Aluminum
Box Track and Hardware



Notes:

- Quick release hangers allow easy door hanging and removal
- 9709 grooved fascia available

Additional Notes:

- Interchanges with:
Stanley 125/250 Series
Johnson 100 Series

PRODUCT SPECIFICATIONS

USE:

- 9611 Series for doors weighing up to 150 lbs (68 kg) per door
- 9612 Series for doors weighing up to 250 lbs (113 kg) per door

BY-PASS SETS:

- 9611 Series Set includes two 9821 tracks and one 9892 parts bag
For two 30" (762 mm) door - 9611-60
For two 36" (914 mm) doors - 9611-72
For two 48" (1219 mm) doors - 9611-96

- 9612 Series Set includes two 9821 tracks and one 9893 parts bag
For two 30" (762 mm) doors - 9612-60
For two 36" (914 mm) doors - 9612-72
For two 48" (1219 mm) doors - 9612-96

TRACK LENGTH: - 9821-59

- 59" (1499 mm) - 9821-59
- 71" (1803 mm) - 9821-71
- 96" (2438 mm) - 9821-96
- 144" (3658 mm) - 9821-144

ALUMINUM FASCIA LENGTH:

72" (1829 mm) - 9709-72

ALUMINUM FASCIA HEIGHT:

- 2-3/4" (70 mm)

PARTS BAG:

- 9892
4 each 9824 4-Wheel Hangers with Quick Release Top Mount Plate 1 each 9909
Guide 9573 Spacer Kit