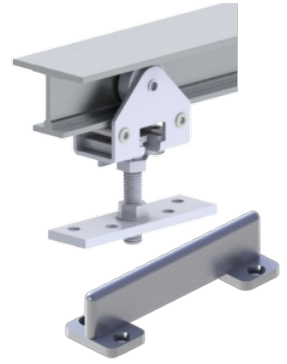


## 9130 Series

Heavy Duty Aluminum  
I-Beam Track and Hardware

### Notes:

- Compares to: Grant 1210/1230 Series
- Two (2) pieces required per by pass



## PRODUCT SPECIFICATIONS

### SETS:

- 9130-60
- 5' (1524 mm) Track Set for 2'6" (762 mm) door
- 9130-72
- 6' (1829 mm) Track Set for 3'0" (914 mm) door
- 9130-84
- 7' (2134 mm) By-Pass Set for 3'0" (1067 mm) Doors
- 9130-96
- 8' (2438 mm) By-Pass Set for 4'0" (1219 mm) Doors
- 9130-120
- 10' (3048 mm) Track Set for 5'0" (1524 mm) door
- 9130-132
- 11' (3353 mm) Track Set for 5'6" (1676 mm) door
- 9130-144
- 12' (3658 mm) Track Set for 6'0" (1829 mm) door

### K LENGTH:

- 9101-72
- 72" (1829 mm)
- 9101-84
- 84" (2134 mm)
- 9101-96
- 96" (2438 mm)
- 9101-120
- 120" (3048 mm)
- 9101-144
- 144" (3658 mm)
- 9101-192
- 192" (4877 mm)

### PARTS B:

- 9129
- 2 each 9105 4-Wheel Hanger
- 1 each 9115 Floor Guide

### INSTALLATION:

- Clearance between door bottom and top of 9122 track must be 5/8" (16 mm) minimum to 1" (25.4 mm) maximum

## PRODUCT SIZE OPTIONS

PART #	DESCRIPTION
9130-60	5' (1524 mm) Track Set for 2'6" (762 mm) Door
9130-72	6' (1829 mm) Track Set for 3'0" (914 mm) Door
9130-120	10' (3048 mm) Track Set for 5'0" (1524 mm) Door
9130-132	11' (3353 mm) Track Set for 5'6" (1676 mm) Door
9130-144	12' (3658 mm) Track Set for 6'0" (1829 mm) Door