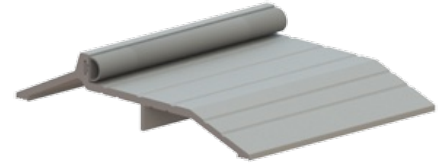


## 575S



### Application:

- Use in conjunction with surface applied vertical rod exit device

## PRODUCT SPECIFICATIONS

### FINISHES:

- MIL, DBA, GLD

### INSERTS:

- V= Vinyl
- N= Neoprene, EDPM, or TPE
- S= Silicone
- W= Pile

### WIDTH:

- 5" (127 mm)

### HEIGHT:

- 1" (25.4 mm)

### OPTIONS:

- Available with Sure-Step non-slip abrasive coating

### FASTENERS:

- #10 x 1-1/2" sheet metal screws, other screw types and anchors available upon request

### DOOR CLEARANCE:

- Allow 11/16"

### NOTES:

- MIL finish thresholds are supplied with zinc plated screws
- Color anodized thresholds are supplied with screws plated to match