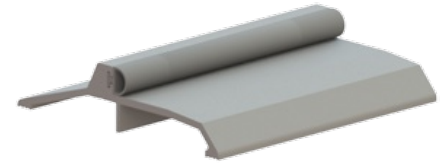


565S

3-5/8" Panic Threshold



Application:

- Use in conjunction with surface applied vertical rod exit device



PRODUCT SPECIFICATIONS

FINISHES:

- MIL, DBA, GLD

INSERTS:

- V= Vinyl
- N= Neoprene, EDPM, or TPE
- S= Silicone
- W= Pile

WIDTH:

- 3-5/8" (92 mm)

HEIGHT:

- 7/8" (22.2 mm)

OPTIONS:

- Available with Sure-Step non-slip abrasive coating

FASTENERS:

- #10 x 1-1/2" sheet metal screws, other screw types and anchors available upon request

DOOR CLEARANCE:

- Allow 5/8"

NOTES:

- MIL finish thresholds are supplied with zinc plated screws
- Color anodized thresholds are supplied with screws plated to match