



# CEILING ACCESS HATCHES

## Model KSTE/CAD (Exposed Grid)

For Use in Square or Beveled Edge Ceiling Tile



**KARP ASSOCIATES, INC.**  
 260 Spagnoli Road Melville, NY 11747  
 (631) 768-8300 - Phone  
 (631) 768-8350 - Fax

DATE

### SPECIFICATIONS

#### GENERAL SCOPE:

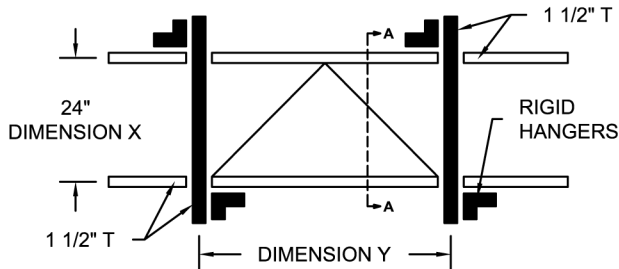
Access doors shall be Karp Type KSTE/CAD as manufactured by Karp Associates, Inc., Melville, N.Y. Sizes shall be as indicated on the drawings.

#### CONSTRUCTION:

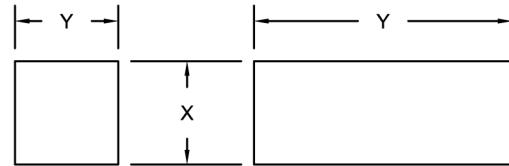
1. Frame shall be 20 gage hot dipped galvanized steel.
2. Door shall be 20 gage electro-galvanized steel with 7/32" flange stove enameled white.
3. Escutcheon caps shall be plastic molded with hinged flaps.
4. Locks shall be budget locks operated with square shanked key.

#### STANDARD SIZES (Special Sizes On Request)

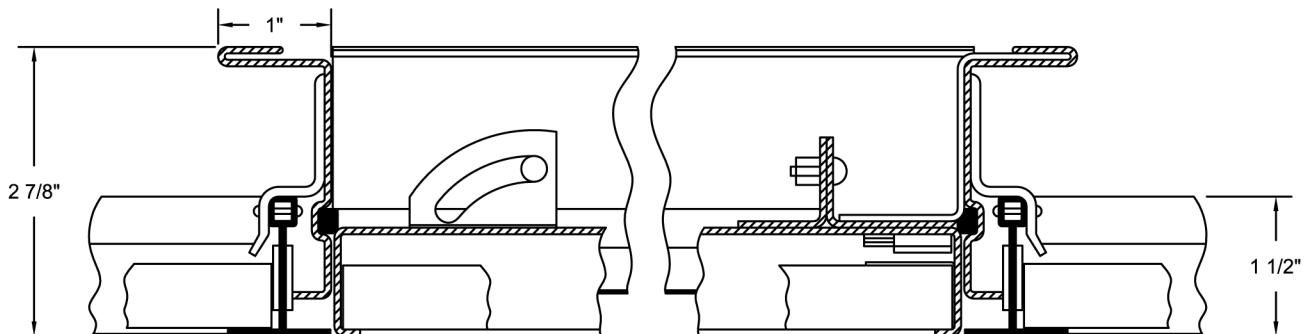
DOOR SIZE (IN.)		SHIP WT. (LBS.)
X	Y	
24	24	19.0
24	48	35.0




PANEL SUPPORT ILLUSTRATION



OPENING SYSTEMS



SECTION A-A  
 SCALE 1:2

PROJECT DATA					
Project Name:					
Architect:					
Contractor:					
Agent/Customer Name:					
Tagging Instructions:					
Special Instructions:					
To be purchased from Industrial Hardware & Specialties, Inc.					
www.industrialhardware.com					
T:973-684-4010 Fax:973-684-3095					
					
PROJECT SCHEDULE					
Qty.	H	W	No. of Latches	Finish	Remarks



Made with Union Labor