



RECESSED ACCESS DOOR

Model DSC-210

For Acoustical Tile



KARP ASSOCIATES, INC.
 260 Spagnoli Road, Melville, NY 11747
 (631)768-8300 - Phone
 (631)768-8350 - Fax

DATE

SPECIFICATIONS

GENERAL SCOPE:

Access doors shall be Karp Type DSC-210 as manufactured by Karp Associates, Inc., Melville, N.Y. Sizes shall be as indicated on the drawings.

CONSTRUCTION:

1. Frame shall be 14 gage steel and door shall 16 gage steel.
2. Door shall be recessed 1".
3. Hinge shall be concealed pivoting rod type.
4. Locks shall be flush and screwdriver operated with cam and studs, or shall be key operated cylinder lock with automatic dust shutter.
5. Finish shall be prime coat of rust inhibitive electrostatic powder, baked white enamel.

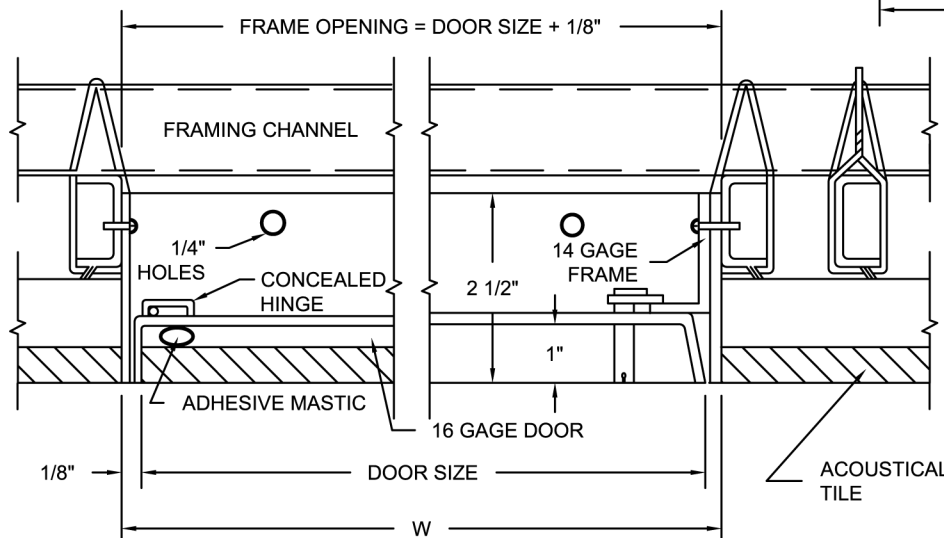
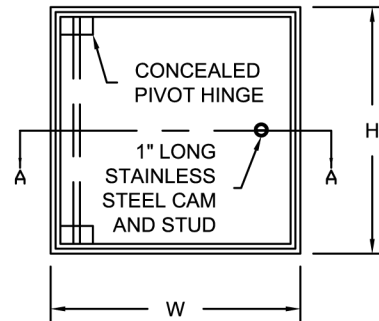
STANDARD SIZES

| DOOR SIZE H X W (IN.) | WALL/CEILING OPENING (IN.) | NUMBER OF STUD LATCHES | SHIP WT. (LBS.) |
|--------------------------|-------------------------------|------------------------------|--------------------|
| 12 x 12 | 12 1/8 x 12 1/8 | 1 | 6.7 |
| 18 x 18 | 18 1/8 x 18 1/8 | 2 | 12.4 |
| 24 x 12 | 24 1/8 x 12 1/8 | 2 | 10.6 |
| 24 x 24 | 24 1/8 x 24 1/8 | 2 | 19.2 |
| 36 x 24 | 36 1/8 x 24 1/8 | 2 | 32.0 |

| PROJECT DATA | | | | | |
|--|--|--|--|--|--|
| Project Name: | | | | | |
| Architect: | | | | | |
| Contractor: | | | | | |
| Agent/Customer Name: | | | | | |
| Tagging Instructions: | | | | | |
| Special Instructions: | | | | | |
| To be purchased from Industrial Hardware & Specialties, Inc. | | | | | |
| www.industrialhardware.com | | | | | |
| T:973-684-4010 Fax:973-684-3095 | | | | | |



| PROJECT SCHEDULE | | | | | |
|------------------|---|---|----------------|--------|---------|
| Qty. | H | W | No. of Latches | Finish | Remarks |
| | | | | | |
| | | | | | |
| | | | | | |
| | | | | | |
| | | | | | |
| | | | | | |



Made with Union Labor

SECTION A-A