

Flushed Access Doors

FOR DRYWALL

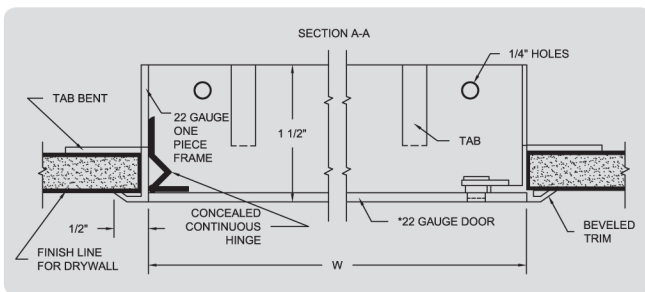


PF (Press-Fit)

The Press-Fit door is a unique lightweight door that installs easily by bending the tabs on the return back to grip the drywall. The frame, return and doorstop are one-piece construction with a beveled frame resulting in an attractive finished look.

MATERIAL	Trim, Return & Doorstop: one-piece construction, 22 ga. steel Door (< 18" x 18"): 22 ga. steel Door (≥ 18" x 18"): 20 ga. steel
HINGE TYPE	Concealed continuous piano hinge
LATCH TYPE	Flush & screwdriver operated or cylinder lock with dust shutter
FINISH	Prime coat of rust inhibitive electrostatic powder, painted white

NOTES Return has bendable tabs for easy installation into drywall



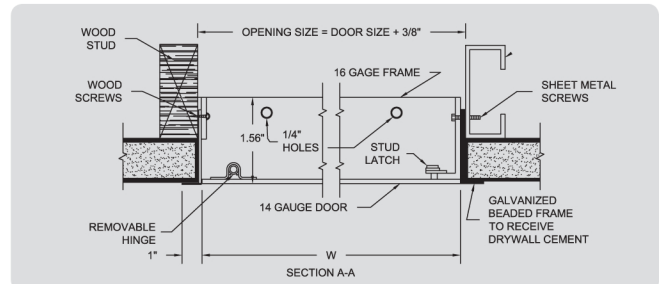
DOOR SIZE (H X W)	WALL / CEILING OPENING	NUMBER OF LATCHES	SHIPPING WEIGHT (LBS)
8" x 8"	7 ¹³ / ₁₆ " x 7 ¹³ / ₁₆ "	1	1.5 lbs
12" x 12"	11 ¹³ / ₁₆ " x 11 ¹³ / ₁₆ "	1	2.5 lbs
14" x 14"	13 ¹³ / ₁₆ " x 13 ¹³ / ₁₆ "	1	3 lbs
18" x 18"	17 ¹³ / ₁₆ " x 17 ¹³ / ₁₆ "	2	4.6 lbs
24" x 24"	23 ¹³ / ₁₆ " x 23 ¹³ / ₁₆ "	2	7.4 lbs



KDW

The KDW has a textured frame and bead so drywall joint compound can be applied in sufficient thickness to conceal the flange. Pre-punched holes in the flange facilitate fastening the flange to framing members with drywall screws.

MATERIAL	Frame: 16 ga. steel / Door: 14 ga. steel
HINGE TYPE	Pin type hinge, spring loaded making door removable
LATCH TYPE	Flush & screwdriver operated or cylinder lock with dust shutter
FINISH	Prime coat of rust inhibitive electrostatic powder, painted white



DOOR SIZE (H X W)	WALL / CEILING OPENING	NUMBER OF LATCHES	SHIPPING WEIGHT (LBS)
6" x 6"	6 ³ / ₈ " x 6 ³ / ₈ "	1	1.8 lbs
8" x 8"	8 ³ / ₈ " x 8 ³ / ₈ "	1	2.4 lbs
10" x 10"	10 ³ / ₈ " x 10 ³ / ₈ "	1	3.3 lbs
12" x 12"	12 ³ / ₈ " x 12 ³ / ₈ "	2	5.8 lbs
14" x 14"	14 ³ / ₈ " x 14 ³ / ₈ "	2	6.5 lbs
16" x 16"	16 ³ / ₈ " x 16 ³ / ₈ "	2	8.8 lbs
18" x 18"	18 ³ / ₈ " x 18 ³ / ₈ "	2	11.1 lbs
22" x 22"	22 ³ / ₈ " x 22 ³ / ₈ "	4	15.3 lbs
24" x 24"	24 ³ / ₈ " x 24 ³ / ₈ "	5	17.2 lbs
36" x 24"	36 ³ / ₈ " x 24 ³ / ₈ "	5	25.9 lbs

* Special sizes and modifications available on request.