

Recessed Access Doors

FOR DRYWALL

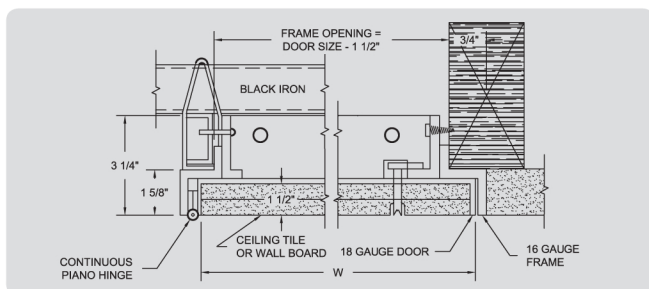


KATR

The KATR is designed to provide access in a suspended drywall ceiling that is part of a fire rated floor-ceiling assembly. The combination of steel and double thickness of drywall maintains the fire resistive qualities of the floor-ceiling assembly.

The KATR does not have any fire rated certification.

MATERIAL	Frame: 16 ga. steel Door: 18 ga. steel and recessed 1 1/2" to accommodate double thickness of drywall
HINGE TYPE	Exposed continuous piano hinge
LATCH TYPE	Flush to finished surface; Screwdriver operated with stainless steel cam and studs or cylinder lock with automatic dust shutter
FINISH	Prime coat of rust inhibitive electrostatic powder, painted white



DOOR SIZE (H X W)	WALL / CEILING OPENING	NUMBER OF LATCHES	SHIPPING WEIGHT (LBS)
12" x 12"	10 1/2" x 10 1/2"	1	6.7 lbs
18" x 18"	16 1/2" x 16 1/2"	2	11.6 lbs
24" x 24"	22 1/2" x 22 1/2"	2	18.1 lbs
30" x 22"	28 1/2" x 20 1/2"	2	19.5 lbs

* Special sizes and modifications available on request.

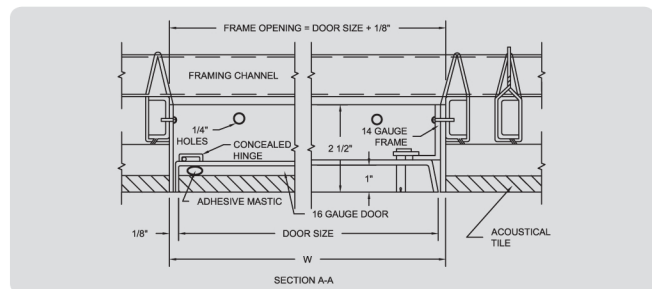
FOR TILE



DSC-210

The DSC-210 is designed so that all makes and types of tile thickness up to 1" fit snugly to the recess of the panel. The unique concealed pivoting bar hinge operates completely out of sight so only the metal thickness of the door and frame is visible.

MATERIAL	Frame: 14 ga. steel Door: 16 ga. steel and recessed 1"
HINGE TYPE	Concealed pivoting rod
LATCH TYPE	Flush to finished surface; Screwdriver operated with stainless steel cam and studs or cylinder lock with automatic dust shutter
FINISH	Prime coat of rust inhibitive electrostatic powder, painted white



DOOR SIZE (H X W)	WALL / CEILING OPENING	NUMBER OF LATCHES	SHIPPING WEIGHT (LBS)
12" x 12"	12 1/8" x 12 1/8"	1	6.7 lbs
18" x 18"	18 1/8" x 18 1/8"	2	12.4 lbs
24" x 12"	24 1/8" x 12 1/8"	2	10.6 lbs
24" x 24"	24 1/8" x 24 1/8"	2	19.2 lbs
36" x 24"	36 1/8" x 24 1/8"	2	32 lbs

* Special sizes and modifications available on request.