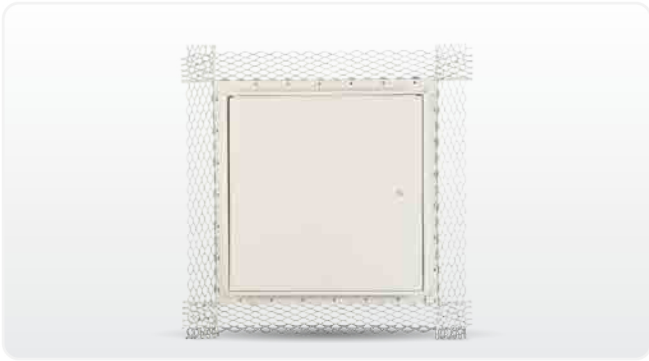


Plaster Access Doors

FLUSHED DOORS



DSC-214PL

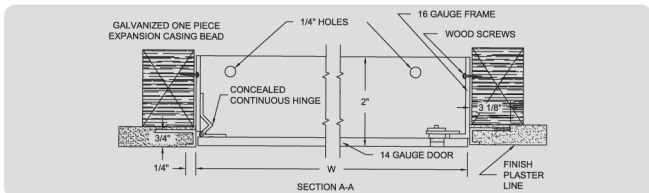
The DSC-214PL has an expansion casing bead with galvanized lath providing a neat, tight protected finish between frame and plaster, while furnishing added plaster reinforcement.

MATERIAL Frame: 16 ga. steel and surrounded by a 22 ga. expansion casing with metal bead lath
Door: 14 ga. steel

HINGE TYPE Concealed continuous piano hinge

LATCH TYPE Flush & screwdriver operated or cylinder lock with dust shutter

FINISH Prime coat of rust inhibitive electrostatic powder, painted white



DOOR SIZE (H X W)	WALL / CEILING OPENING	NUMBER OF LATCHES	SHIPPING WEIGHT (LBS)
8" x 8"	8 ³ / ₈ " x 8 ³ / ₈ "	1	3.5 lbs
10" x 10"	10 ³ / ₈ " x 10 ³ / ₈ "	1	4.5 lbs
12" x 12"	12 ³ / ₈ " x 12 ³ / ₈ "	1	6 lbs
14" x 14"	14 ³ / ₈ " x 14 ³ / ₈ "	2	8.5 lbs
16" x 16" *	16 ³ / ₈ " x 16 ³ / ₈ "	2	11 lbs
18" x 12"	18 ³ / ₈ " x 12 ³ / ₈ "	2	10 lbs
18" x 18"	18 ³ / ₈ " x 18 ³ / ₈ "	2	13 lbs
20" x 16"	20 ³ / ₈ " x 16 ³ / ₈ "	2	14 lbs
24" x 12"	24 ³ / ₈ " x 12 ³ / ₈ "	2	12 lbs
24" x 20"	24 ³ / ₈ " x 20 ³ / ₈ "	2	17 lbs
24" x 24"	24 ³ / ₈ " x 24 ³ / ₈ "	5	20 lbs
30" x 20"	30 ³ / ₈ " x 20 ³ / ₈ "	5	21 lbs
30" x 24"	30 ³ / ₈ " x 24 ³ / ₈ "	5	23.5 lbs
30" x 30"	30 ³ / ₈ " x 30 ³ / ₈ "	5	30 lbs
36" x 24"	36 ³ / ₈ " x 24 ³ / ₈ "	5	28 lbs
36" x 36"	36 ³ / ₈ " x 36 ³ / ₈ "	5	39 lbs

RECESSED DOORS



DSC-210PL

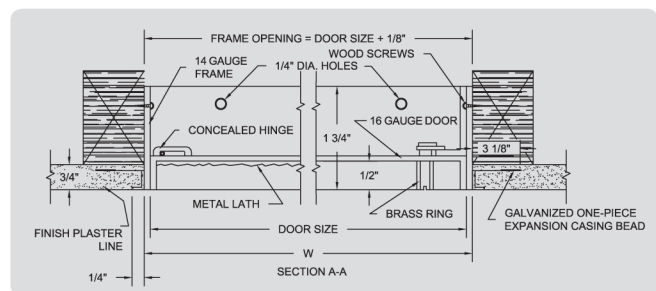
The DSC-210PL is recessed 1/2" and lined with self-furring metal lath allowing plaster of surrounding surfaces to continue without interruption over face of door.

MATERIAL Frame: 14 ga. steel and surrounded by a 22 ga. expansion casing with metal bead lath
Door: 16 ga. steel, recessed 1/2" and lined with self furring 3.4" flast ribbed galvanized steel lath

HINGE TYPE Concealed pivoting rod

LATCH TYPE Flush to finished surface; Screwdriver operated with stainless steel cam and studs or cylinder lock with automatic dust shutter

FINISH Prime coat of rust inhibitive electrostatic powder, painted white



DOOR SIZE (H X W)	WALL / CEILING OPENING	NUMBER OF LATCHES	SHIPPING WEIGHT (LBS)
12" x 12"	12 ¹ / ₈ " x 12 ¹ / ₈ "	1	6.7 lbs
18" x 18"	18 ¹ / ₈ " x 18 ¹ / ₈ "	2	12.4 lbs
24" x 12"	24 ¹ / ₈ " x 12 ¹ / ₈ "	2	10.6 lbs
24" x 24"	24 ¹ / ₈ " x 24 ¹ / ₈ "	2	19.2 lbs
36" x 24"	36 ¹ / ₈ " x 24 ¹ / ₈ "	2	32 lbs

* Special sizes and modifications available on request.