

Universal Access Doors

FOR ALL SURFACES



DSC-214M

The DSC-214M is a distinctly superior access door for new installations or for remodeling. The exposed flange adds rigidity to the unit and perfectly conceals the rough wall opening. Flexible anchor straps can be provided for installation within masonry.

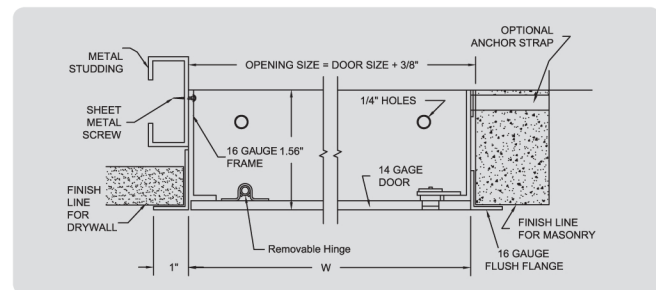
MATERIAL	Frame: 16 ga. steel / Door: 14 ga. steel
HINGE TYPE	Pin type hinge, spring loaded making door removable
LATCH TYPE	Flush & screwdriver operated or cylinder lock with dust shutter
FINISH	Prime coat of rust inhibitive electrostatic powder, painted white
TRIM	1" wide, one-piece construction
NOTES	Masonry anchor straps can be included on all frames if specified

DOOR SIZE (H X W)	WALL / CEILING OPENING	NUMBER OF LATCHES	SHIPPING WEIGHT (LBS)
6" x 6"	6 ³ / ₈ " x 6 ³ / ₈ "	1	2.1 lbs
8" x 8"	8 ³ / ₈ " x 8 ³ / ₈ "	1	3.1 lbs
10" x 10" *	10 ³ / ₈ " x 10 ³ / ₈ "	1	4.3 lbs
12" x 8"	12 ³ / ₈ " x 8 ³ / ₈ "	1	4.6 lbs
12" x 12"	12 ³ / ₈ " x 12 ³ / ₈ "	1	6.3 lbs
14" x 14"	14 ³ / ₈ " x 14 ³ / ₈ "	2	8.1 lbs
16" x 12"	16 ³ / ₈ " x 12 ³ / ₈ "	2	7.8 lbs
16" x 16" *	16 ³ / ₈ " x 16 ³ / ₈ "	2	9.9 lbs
18" x 12"	18 ³ / ₈ " x 12 ³ / ₈ "	2	8.9 lbs
18" x 18" *	18 ³ / ₈ " x 18 ³ / ₈ "	2	12.2 lbs
20" x 16"	20 ³ / ₈ " x 16 ³ / ₈ "	2	11.8 lbs
22" x 22"	22 ³ / ₈ " x 22 ³ / ₈ "	4	16.3 lbs
24" x 12"	24 ³ / ₈ " x 12 ³ / ₈ "	2	10.6 lbs
24" x 18"	24 ³ / ₈ " x 18 ³ / ₈ "	2	14.5 lbs
24" x 20"	24 ³ / ₈ " x 20 ³ / ₈ "	2	16.5 lbs
24" x 24" *	24 ³ / ₈ " x 24 ³ / ₈ "	5	18.7 lbs
30" x 20"	30 ³ / ₈ " x 20 ³ / ₈ "	5	20.1 lbs
30" x 22"	30 ³ / ₈ " x 22 ³ / ₈ "	5	21.7 lbs
30" x 24"	30 ³ / ₈ " x 24 ³ / ₈ "	5	23.6 lbs
30" x 30"	30 ³ / ₈ " x 30 ³ / ₈ "	5	27.8 lbs
36" x 22"	36 ³ / ₈ " x 22 ³ / ₈ "	5	25.6 lbs
36" x 24"	36 ³ / ₈ " x 24 ³ / ₈ "	5	28.2 lbs
36" x 36"	36 ³ / ₈ " x 36 ³ / ₈ "	5	36.8 lbs
48" x 24"	48 ³ / ₈ " x 24 ³ / ₈ "	6	34.4 lbs

* These sizes available as standard sizes in stainless steel.
Special sizes and modifications available on request.

The newly redesigned DSC-214M general purpose access door is now standard with:

- White finish of rust inhibitive electrostatic powder paint.
- Redesigned frame with radius corners and 1" wide trim.
- Spring-loaded pin hinge makes door removable.



DID YOU KNOW?

All Karp steel and stainless steel access doors are proudly made in America.

