

# Recessed Access Doors

## FOR DRYWALL



### KATR

The KATR is designed to provide access in a suspended drywall ceiling that is part of a fire rated floor-ceiling assembly. The combination of steel and double thickness of drywall maintains the fire resistive qualities of the floor-ceiling assembly.

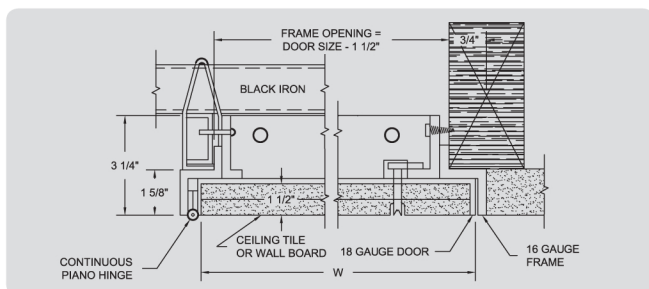
**The KATR does not have any fire rated certification.**

**MATERIAL** Frame: 16 ga. steel  
Door: 18 ga. steel and recessed 1 1/2" to accommodate double thickness of drywall

**HINGE TYPE** Exposed continuous piano hinge

**LATCH TYPE** Flush to finished surface; Screwdriver operated with stainless steel cam and studs or cylinder lock with automatic dust shutter

**FINISH** Prime coat of rust inhibitive electrostatic powder, painted white



| DOOR SIZE (H X W) | WALL / CEILING OPENING | NUMBER OF LATCHES | SHIPPING WEIGHT (LBS) |
|-------------------|------------------------|-------------------|-----------------------|
| 12" x 12"         | 10 1/2" x 10 1/2"      | 1                 | 6.7 lbs               |
| 18" x 18"         | 16 1/2" x 16 1/2"      | 2                 | 11.6 lbs              |
| 24" x 24"         | 22 1/2" x 22 1/2"      | 2                 | 18.1 lbs              |
| 30" x 22"         | 28 1/2" x 20 1/2"      | 2                 | 19.5 lbs              |

\* Special sizes and modifications available on request.

## FOR TILE



### DSC-210

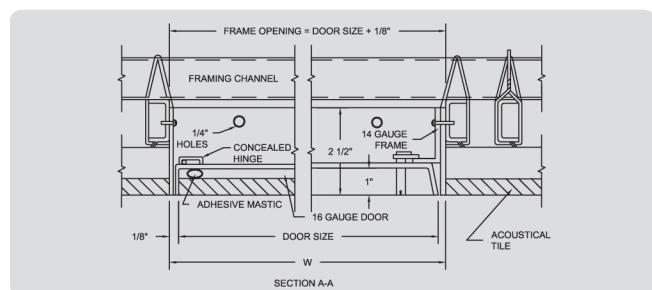
The DSC-210 is designed so that all makes and types of tile thickness up to 1" fit snugly to the recess of the panel. The unique concealed pivoting bar hinge operates completely out of sight so only the metal thickness of the door and frame is visible.

**MATERIAL** Frame: 14 ga. steel  
Door: 16 ga. steel and recessed 1"

**HINGE TYPE** Concealed pivoting rod

**LATCH TYPE** Flush to finished surface; Screwdriver operated with stainless steel cam and studs or cylinder lock with automatic dust shutter

**FINISH** Prime coat of rust inhibitive electrostatic powder, painted white



| DOOR SIZE (H X W) | WALL / CEILING OPENING | NUMBER OF LATCHES | SHIPPING WEIGHT (LBS) |
|-------------------|------------------------|-------------------|-----------------------|
| 12" x 12"         | 12 1/8" x 12 1/8"      | 1                 | 6.7 lbs               |
| 18" x 18"         | 18 1/8" x 18 1/8"      | 2                 | 12.4 lbs              |
| 24" x 12"         | 24 1/8" x 12 1/8"      | 2                 | 10.6 lbs              |
| 24" x 24"         | 24 1/8" x 24 1/8"      | 2                 | 19.2 lbs              |
| 36" x 24"         | 36 1/8" x 24 1/8"      | 2                 | 32 lbs                |

\* Special sizes and modifications available on request.