

Plastic Access Doors

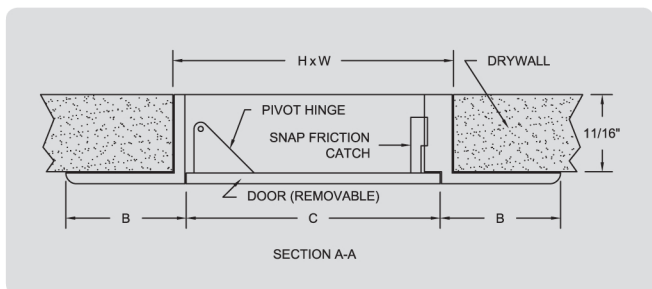
EASY INSTALL



HA Plastic Access Door with Removable-Hinged Door

The Handi-Access plastic door is suitable for all surfaces and can be installed easily by applying glue or caulking adhesive to the back of the frame and pressing into place.

MATERIAL	1/8" high impact styrene plastic
HINGE TYPE	Pivot hinge (enables door panel to be hinged and removable)
LATCH TYPE	Snap friction catch (no special tools required)
FINISH	White lightly textured exposed surface for easy painting or wallpapering



DOOR SIZE (H X W)	WALL SIZE (H X W)		SHIPPING WEIGHT (LBS)
	B	C	
6" x 4"	1"	5 ⁵ / ₈ " x 3 ⁵ / ₈ "	.25 lbs
9" x 6"	1"	8 ⁵ / ₈ " x 5 ⁵ / ₈ "	.5 lbs
8" x 8"	1"	7 ³ / ₄ "	.6 lbs
12" x 12"	1 ¹ / ₈ "	11 ⁵ / ₈ "	1.2 lbs
14" x 14"	1 ¹ / ₄ "	13 ³ / ₄ "	1.6 lbs
18" x 18"	1 ³ / ₈ "	17 ¹ / ₄ "	2.5 lbs
22" x 22"	1 ¹ / ₄ "	21 ⁵ / ₈ "	3.4 lbs
29" x 14"	1 ⁵ / ₈ "	29 ¹ / ₈ " x 13 ¹³ / ₁₆ "	3.8 lbs

Surface Mounted

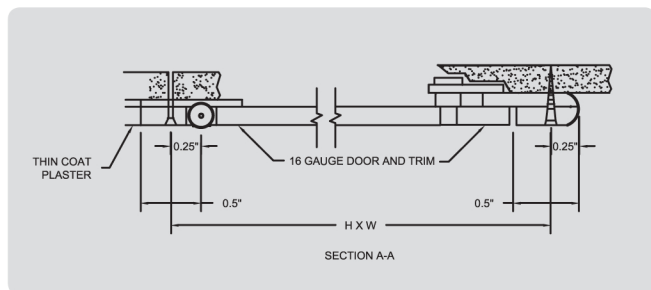
EASY INSTALL



DSB-214SM

The DSB-214SM is a surface mounted door that does not require framing, bracing or notching and cutting of inner wall obstructions. Single piece construction of the frame prevents unit from racking and allows door to sit perfectly within frame and to open to 175°.

MATERIAL	16 ga. steel (12" x 12" and smaller) 14 ga. steel (larger than 12" x 12")
HINGE TYPE	Exposed continuous piano hinge
LATCH TYPE	Flush & screwdriver operated or cylinder lock with dust shutter
FINISH	Prime coat of rust inhibitive electrostatic powder, painted white



DOOR SIZE (H X W)	NUMBER OF LATCHES	SHIPPING WEIGHT (LBS)
8" x 8"	1	1.8 lbs
12" x 12"	1	4.2 lbs
16" x 16"	2	7 lbs
24" x 24"	5	13.7 lbs